
ARTWORK

Parquet, the stage for your life.



BAUWERK®
Parquet

Cleverpark wields the full potential of the traditional art of parquet laying and brings creative variety to the floor.

CLEVERPARK 900

Oak Mandorla, lively, pattern N° 12



CONTENT

ARTWORK NO. 12 | 4. 2023

- 02 Editorial
- 04 Wood – The miracle material

06 NEWS & TRENDS

- 08 Playful accents
- 12 Clever meets creative
- 14 Wood – An on-trend material with a future

16 OUR ASSORTMENT

- 18 Unicopark
- 22 Silverline Edition
- 26 Casapark
- 32 Villapark
- 40 Studiopark
- 44 Formpark & Formpark Mini
- 48 Formpark Quadrato
- 52 Formpark Rombico
- 56 Trendpark
- 60 Cleverpark
- 68 Strip parquet
- 72 Multistrip parquet
- 74 Solid parquet
- 76 Wooden accessories
- 78 Colours & sizes
- 82 Surfaces

86 KNOWLEDGE

- 88 Good reasons to choose parquet
- 90 Parquet is taking over our homes
- 92 Renovation of and with parquet
- 94 Colour change due to light

96 SERVICE

- 97 Bauwerk Worlds of Parquet & Showrooms
- 98 Our service for you
- 100 Parquet for a good cause
- 100 Imprint



88 *Good reasons to choose parquet*



90 *Parquet is taking over our homes*



92 *Renovation of and with parquet*



94 *Colour change due to light*

Dear reader,

Parquet can have a positive effect on the entire atmosphere of a room and, as a result, our well-being like no other type of flooring. Wood is always timeless and ever-authentic. One of my biggest reasons for taking the position as Head of the Bauwerk Group was, and still is, the role that our products play in designing indoor spaces and creating well-being for people. At the same time, we are aware of our vital responsibility towards nature. Sustainable forestry, healthy materials, and our continuous efforts to reduce our environmental impact are only some of the aspects that we have committed to, both in our hearts and in our actions (p. 4–5).



This year's "News & Trends" section (p. 6 et seq.) is all about creative laying patterns. Because, just like nature, parquet is a master of transformation. Be it classic or French herringbone, cube pattern or modern geometric ideas, flooring design puts no limits on creativity. Every laying pattern brings its own playful accents when it comes to lighting and structure, creating rich and unique visual impressions of indoor spaces.

But what are the distinctive features of successful interior design? We discuss this and other questions in our interview with Zurich architect Stephan Hürlemann who developed the Formpark concept for Bauwerk Parquet (p. 11).

In the "Our Product Range" section, you can expect even more inspiring insights into various reference projects completed using parquet by Bauwerk (p. 20–67).

The remarkable homes from different eras were all renovated or built with vision and finesse. Their architects succeeded in harmoniously bringing the old and the new together, making them complement and enhance each other.

You will find out why parquet is the right choice for living with children or pets and can be trouble-free if installed in kitchens and bathrooms, as well as other facts about parquet in the "Knowledge" section (p. 86 et seq.).

I sincerely hope that you will find inspiration not only on the following pages, but also on our social media and our website. On the latter, you will find our digital Parquet Visualizer, which will give you an idea of what parquet by Bauwerk would look in your own home. Ideally though, you should experience parquet with all your senses in person, by visiting one of our Worlds of Parquet.

It would bring us joy to know that the parquet that we make with so much passion for detail will also bring warmth and well-being into your home.

Patrick Hardy

Patrick Hardy
CEO & President Bauwerk Group

CARAMELLO
*The new colour
in our range: elegant
and gently warming,
to melt away.*

FORMPARK QUADRATO

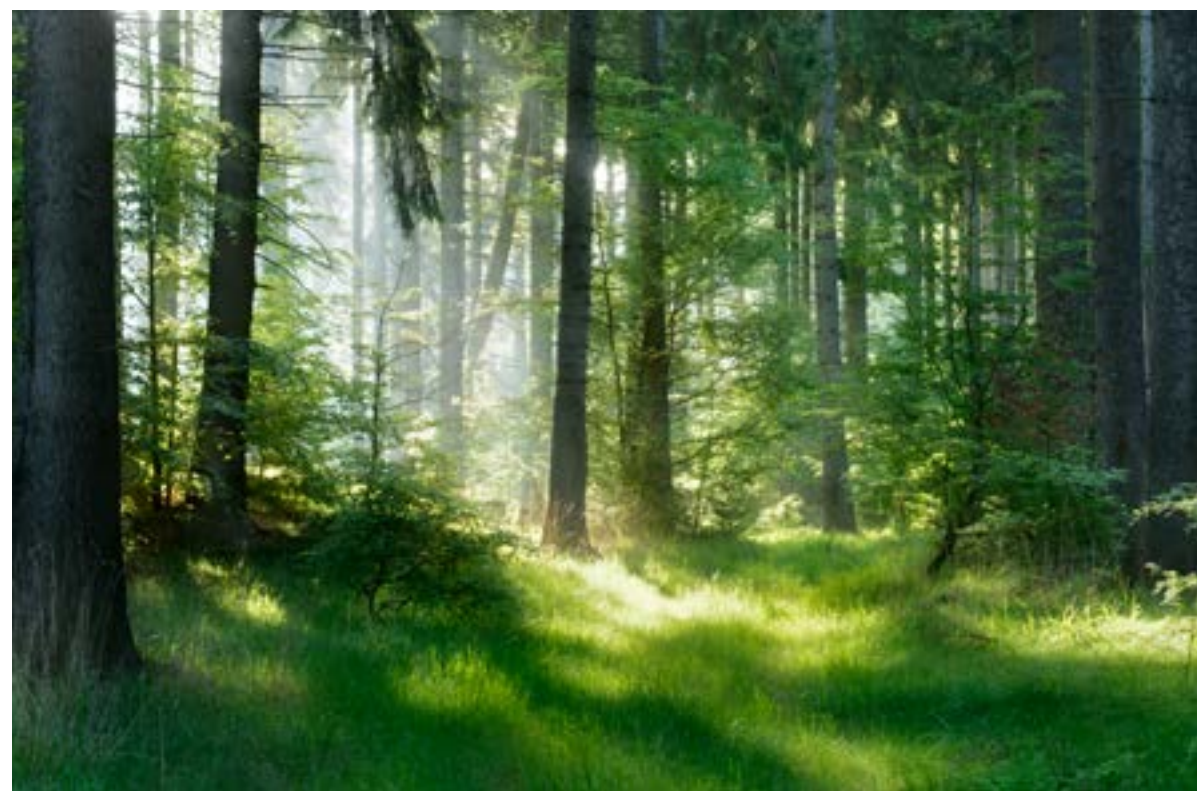
Oak Caramello, calm, pattern N° 12

WOOD

The miracle material

Authentic-wood floors: the most sustainable choice for your home

For us, sustainability is not a trend, but a company philosophy we have been following for decades. And, as part of this, we consistently put emphasis on wood as a naturally renewable raw material. Wood is lasting, durable, versatile, can be completely recycled, and each piece of it is unique. Unlike other materials, wood stores large quantities of CO₂. We have the privilege of using this fascinating natural product to make parquet floors.



Controlled origin

'Sustainability' is originally a forestry term, referring to a method for managing a forest, whereby consumption does not exceed what nature can produce. For our parquet, we only use wood from controlled forestry sites and forests that have FSC® or PEFC® certification. We try to keep the supply routes for wood as short as possible. We procure 96% of the wood we use (oak, beech, etc.) from Europe, and only 3% comes from North America (walnut and maple). More than 60% of the Bauwerk Parquet product range is produced at its main facility in StMargrethen.



A healthy material

98% of our parquet consists of wood, and to be produced, wood essentially just needs sunlight, air and water. Compared to other types of flooring, manufacturing parquet is very energy-efficient, because we effectively 'only' need to shape the raw material that nature gives us. Most of the energy goes into drying the wood, and we even manage to keep this CO₂-neutral, as we reuse waste wood. In addition to the wood, manufacturing parquet involves other materials like adhesives, lacquers and oils. At Bauwerk Parquet, all these components meet our high '100% healthy living' standard, which is confirmed by independent bodies, including the strict requirements of the eco-INSTITUT label.

Lasting for generations

With regular care, wooden floors are extremely durable and exhibit incredible longevity, lasting for decades. Nevertheless, life tends to leave its trace on everything, and parquet is no exception. However, floors made from authentic wood can be partially repaired or can undergo a complete sanding process, although often thorough professional cleaning is even enough. There's another advantage: if you don't like your old parquet floor anymore, you can give it a completely new appearance, even after decades of use. This turns parquet into a timeless and life-long companion for your home: renewable, repairable, and therefore long-lasting.



"We strive to continuously reduce our impact on the environment. The energy we use to make our products in Switzerland and Lithuania is already climate neutral. For our facility in Croatia, we are currently looking for a source of CO₂-neutral electricity."

Julius Nickl, Sustainability Manager Bauwerk Group

NEWS & TRENDS

New interpretation of classic patterns

A touch of nature under our feet, the pleasant acoustics and the interplay with the light: parquet is an unparalleled experience: appealing to the senses, authentic, sustainable, and timelessly beautiful. And just like nature, it is a master of transformation. Subtle changes in features of the wood, colours, structures, formats and laying patterns make parquet synonymous with diversity that knows no bounds.

Discover our new products...

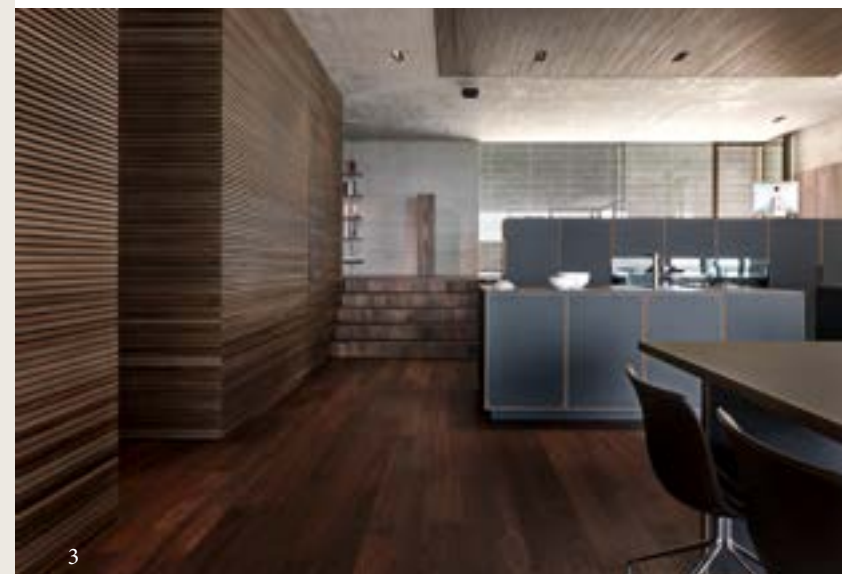
1 | Formpark Rombico Oak Mandorla; 2 | Apartment Amsterdam (NL), Photo: Charlotte Kap, Product: Formpark Quadrato, Oak Crema; 3 | House in Balgach, Photo: Bruno Helbling, Product: Trendpark Oak smoked 4 | Formpark Rombico Oak Mandorla; 5 | Formpark Rombico Oak Farina



1



2



3



4



5

More inspiration
on our website:



Playful ACCENTS

Clear design language and creative laying patterns

The lighting conditions and the pattern of the different formats of our Formpark product family create a variety of looks: from calm to lively, from classic to avant-garde. Whether the oak is light-coloured or smoked and dark, the diversity and authenticity of these exclusive parquet planks always make a statement about the personality of those who live there.

1 | Formpark Quadrato Oak Crema, calm, pattern N° 9; 2 | Formpark Quadrato, Oak smoked, calm, pattern N° 1; 3 | Formpark Quadrato Oak Caramello, calm, pattern N° 12



Interplay of lines, structures and light

Thanks to its 1:5 dimensions, Formpark Quadrato can be arranged in many different floor designs, from classic herringbone to cube or ladder-style geometric patterns. The format presents a clear, structured aesthetic, and depending on the arrangement, can give the room more depth. Gliding gently over the surface of the planks, light conjures a lively mood and creates natural shadows, potentially enhancing the visual effect of the room even further.

Multifaceted and striking

With its diversity of laying patterns, Formpark Quadrato is an impressive experience that appeals to the senses. Select your favourite parquet from a broad range of colours and two different surface treatments. Floors intended for creative patterns require a very precise fit, and for this reason, every plank is made by our teams of skilled craftsmen in Switzerland.

Discover the variety offered by Formpark Quadrato on page 48.

- 1 | Formpark Rombico Oak Natural, calm, pattern N° 7
2 | Formpark Rombico Oak Mandorla, calm, pattern N° 1



New interpretation of classic patterns

Thanks to the 45° angle of its individual strips, Formpark Rombico is perfect for laying parquet in a French herringbone pattern. In this pattern, the individual strips of parquet form a set of diagonal lines that give the room a new perspective. The large dimensions of the individual planks make it possible to reinterpret other laying patterns as well, whether you prefer clearer shapes or are looking for a dynamic zig-zag design. In interior design, architectural diagonal lines provide a touch of sophistication, and for Formpark Rombico, this is true for both classic and modern patterns.

Discover the variety brought by Formpark Rombico on page S. 52.

INTERVIEW *Stephan Hürlemann, architect and Formpark concept designer from Zurich*



What does wood as a material mean for you personally? And in your day-to-day work? For me, wood is one of the best materials out there: it looks and feels great, it's malleable and robust, it ages wonderfully, it stores CO₂, and is obviously renewable. This means that wherever it makes sense, I work with wood.

Creative and novel parquet laying patterns have seen a huge revival recently: do you see a particular trend for this? Floors are fixed architectural elements, and as such, they need to stick to long-term approaches in their design language. Therefore, I would certainly avoid fads. At the same time, a floor is always a witness of its time. Many people associate certain laying patterns, like herringbone, with eras of the past. With Formpark, one of my goals was to bring these older typologies to the present. And with its broad planks and tightly-fitting 1:2 and 1:3 proportions, Formpark does indeed succeed in doing this. Old, tried-and-tested patterns look so contemporary and fresh.

What does good interior design mean for you? Good interior architecture doesn't force itself into the foreground, yet never makes itself the centre of attention. Quite the opposite: it offers a stage for the life of

those who use the space, helping them satisfy their needs. It is a place for rituals, it sets the mood that people identify with and are inspired by. To achieve this, I look for clever floor layouts, timeless design language and good-quality authentic materials that, whenever possible, can be recycled. I choose furniture and other objects in such a way that they tell people's stories.

Many shy away from combining different wood types and colours. Do you think there is a tendency to apply simpler rules to follow in order to create a balanced aesthetic in the end? It is actually a difficult task to combine several wood types into a cohesive overall concept. Every wood has its own character, as well as its own look and structure. So I'd be somewhat reserved about the idea of combining different wood types. However, as we've seen earlier, if this approach is used as an elaborate design element for a parquet floor, you can get wonderfully creative results.



"Good interior architecture creates a place for rituals, it sets the mood that people identify with and are inspired by."

Stephan Hürlemann, architect and designer

CLEVER

meets creative

Cleverpark long-plank parquet

There is hardly any other format in the range of Bauwerk Parquet that has as broad of a spectrum of potential applications. Thanks to the large variety of wood types, colours, and installation options Cleverpark can create very different visual effects and produce any kind of aesthetic in a room, from a shipdeck classic look to a more creative pattern.

Clever creativity

Thanks to its elegant 1:9 dimension ratio, Cleverpark 900 works well not only with herringbone but many other classic and modern laying patterns such as parallel ladder and cube. This means you can customise the look of a room even further, whether it's a cosy sleeping area in a detached house, an urban loft apartment or a lively open-space office. Cleverpark uses the full potential brought by the traditional art of laying parquet and brings creative diversity to the floor, all at an attractive price.

Discover the variety of wood types and colours our Cleverpark formats have to offer on page 60.

1 | Cleverpark 900 Oak Farina, calm, pattern N° 14; 2 | Cleverpark 900 Oak Caramello, lively, pattern N° 1; 3 | Cleverpark 900 Oak Mandorla, lively, pattern N° 12; 4 | Cleverpark 900 Oak Nature, calm, pattern N° 19



Our longest herringbone planks

The 900 mm long Cleverpark plank is the longest parquet plank in our product range that can be used to form a herringbone pattern. For some time, herringbone has enjoyed a big revival, and is the prime discipline for parquet installers. Whether integrated into a classic old building look or reinterpreted from a modern perspective, the exquisite arrow-shaped pattern creates a refined and unique appearance and results in interesting lighting effects. This way, parquet becomes a real eye-catcher in the room.



WOOD

An on-trend material with a future

The demand for wood in construction and interior furnishing is greater than ever. This is not only down to sustainability, but also to the fact that wood offers us an aesthetic and sensory contrast to our increasingly digital and fast-paced daily lives. Unlike any other material, wood exudes natural warmth and contributes to the wellness we experience in our own home, whether it features in the parquet floor alone or in combination with other room elements made from this natural material.



Balanced interplay

Vertical wooden slats on the facade of the house, wooden flooring on the terrace and high-quality 1-strip oak planks produce a calm sense of unity in this gem of a home at Lake Geneva, making it appear as if the living space merges with the outdoors. The consistent use of light wood, combined with white surfaces, significantly contributes to the rooms appearing to be flooded with light. Harmony has been achieved here, with the different woods having a similar colour spectrum.

Dark woods: noble and decorative

Dark wood types, like cherry and walnut, are enjoying rising popularity among interior designers. Their perception of appearing confining and outdated can be counteracted by arranging the room and combining them with other interior objects correctly. Smoked oak is another sought-after and eco-friendly alternative to dark tropical wood. The smoking process, which at Bauwerk Parquet results in a completely healthy-living product, has another advantage as treated woods rarely change in colour over time, and even if it is sanded, the parquet will retain its colour.



Differently accentuated grain

Rooms have an impact on us when they contain a certain emotional quality. The architect Fabio Compagno was able to create such an effect in this rustico house in Tessin, through a detailed examination of the existing building, and a special instinct for its renovation. The wooden structure of the exterior elements is visible indoors. The walls, ceilings, and built-in furniture were made using raw spruce panels. A parquet floor made from authentic oak has a less expressive grain, cleverly emphasising the rustic look of the spruce.

1 | Detached house Lake Geneva, Architecture: Graber & Petter Architectes Sàrl, Photo: Lionel Henriod, Product: Villapark Oak Natural; 2 | House in Balgach, Architecture: Novaron Architekten, Photo: Bruno Helbling, Product: Trendpark Oak smoked; 3 | Rustico Manno, Architecture: Fabio Compagno, Photo: Elisa Florian, Product: Cleverpark 1250 Oak Sasso

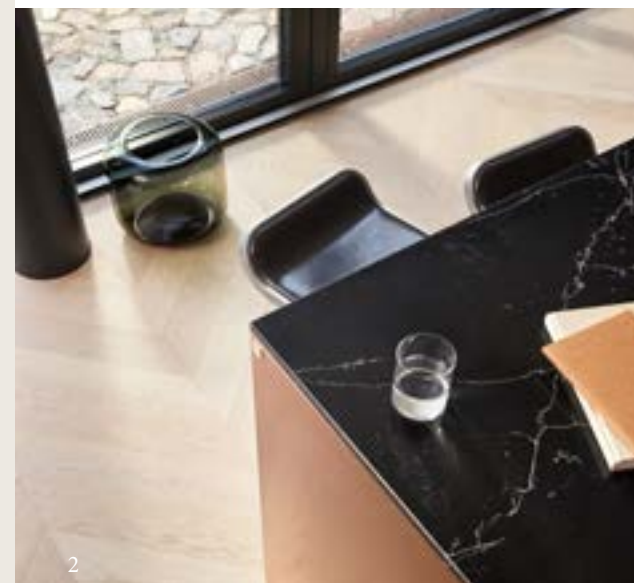
OUR ASSORTMENT

*Exquisite variety
for you*

The world of colours in all its shades, the power of shapes and formats, the echoes of ages past and current trends are all sources of inspiration for us. This inexhaustible pool of possibilities opens imaginative doors to new homes. From the meter-long planks of Unicopark to traditional solid parquet with a retro look, which found its way into the world through Bauwerk.

Experience the world of Bauwerk Parquet...

1 | Terrace house Stetten CH,
Photos: Bruno Helbling,
Product: Casapark Oak
Nature in three widths;
2 | Remise in Berlin DE,
Photos: Sabine Zoltnere,
Product: Formpark Rombico,
Oak Farina; 3 | Unicopark Oak
Farina; 4 | Formpark Mini Oak
Avario; 5 | Rustico Manno CH,
Product: Cleverpark 1250 Oak
Sasso, Photo: Elisa Florian



More details about
the product range
from Bauwerk Parquet:



Natural and spacious

These hand-picked, modular oak planks in different formats add a flair of prestige and spaciousness to the room, making Unicopark live up to its name.

Showing off the space in every way

Natural materials, such as wood, have a positive influence on our well-being, and with the Unicopark format, there is sufficient space to create this effect. The interplay of 1-strip planks in different widths and lengths of up to four metres produces an unmistakable ambiance. A single Unicopark plank provides enough surface area to impressively accentuate the natural structure and character of the wood: from calm to lively.

Careful planning of every single plank

Unicopark opens up new horizons in parquet installation: Bauwerk's experts plan the arrangement of different lengths and widths of the planks based on your floor plan, taking the individual features of your room into account.

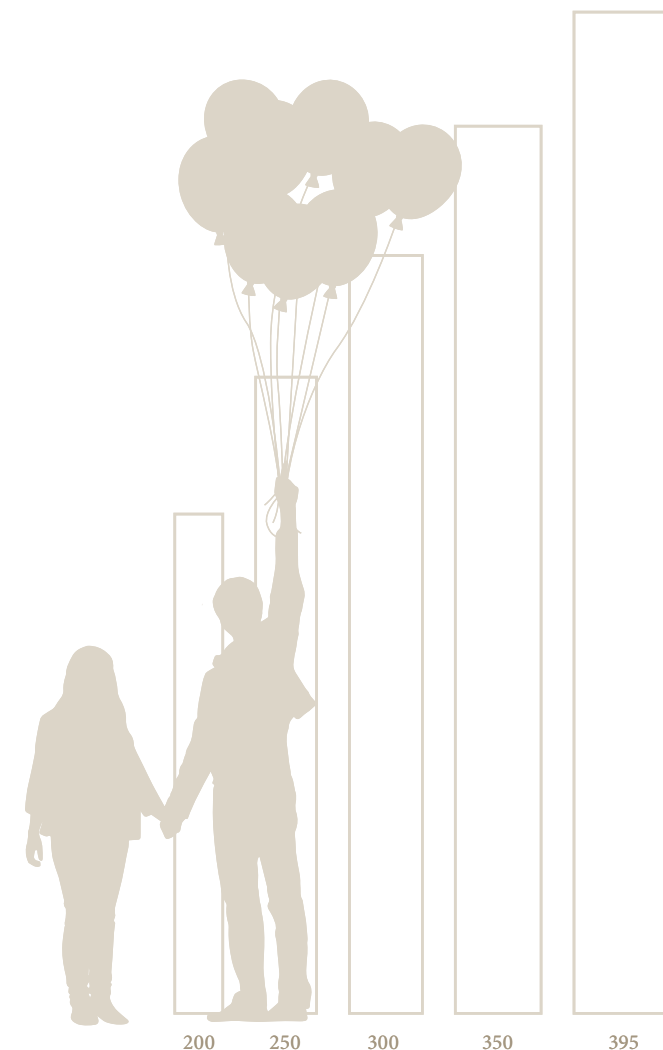
Unicopark is available in the following colours:



Unicopark Handcrafted is available in the following colours:



Unicopark – 2000 to 4000 × 200/250/300/350/395 × 20 mm



UNICOPARK
Oak Avorio Handcrafted, rustic

DETACHED HOUSE	Product:	Unicopark, Oak Fulvo Handcrafted
SALZBURG	Architecture:	Mayr-Architekten ZT GmbH
AUSTRIA	Builder:	Private
	Floor installer:	Stangl Parkett GmbH
	Photos:	Patrick Langwallner

Modern meets NATURAL



Located on a slope on the edge of Salzburg, the new house belonging to a young family stands in green surroundings, its modern cube shape containing not only a retreat close to nature, but also a generously lit hub for its residents' lives.

The atmosphere of elegant wellness

The striking architecture continues, uninterrupted, into the interiors. Tailored to the residents' individual needs and preferences, the clear structures, open areas, and minimalist interiors shape the spacious living space. The cooking/dining area is in the centre, connected to the living room above it via an open staircase. Different living scenarios were approached from a design perspective using uniform, dark-coloured parquet: Unicopark, Handcrafted Oak Fulvo.

Subtly natural

Installed in different plank widths and lengths of up to four metres, the authentic-wood parquet not only looks lively, but also brings out the exclusive character of the large rooms. "The long planks are impressive, and with the different dimensions, it's not easy to spot a repeating pattern. The natural character of oak contributes to this perfectly," clarified the owners of the property, thus explaining the reasons for their choice. The natural aesthetic has not happened by chance: the knots and cracks are carefully highlighted through elaborate manual procedures. Traditional brushing and planing techniques underscore the rustic structure of the wood and place a spotlight on the refined natural-oiled surface. As a result, every plank is just as unique as the living spaces themselves.



UNICOPARK

Oak Fulvo Handcrafted, rustic

SILVERLINE EDITION

Subdued elegance, generously interpreted

There is luxury in simplicity and restraint: the majestic understatement of a wooden floor implies style and individuality. Reduction to the bare essentials becomes the measure of all things.

Three meters long flawless planks

The exclusive planks of the Silverline Edition are carefully hand-picked from particularly fine oaks grown straight upright. The cut of the planks creates fine straight lines running lengthwise. Flawless planks in calm gradings of this length are very uncommon because oaks grow particularly slowly, and producing timber for this format takes decades. The distinctive grading underscores the uniqueness of the wood – so every Silverline floor tells its own story. The special bevels that run around the entire plank further accentuate the impressive length of the almost 3-metre-long Silverline planks.

Bevels emphasise the architecture of the room

They emphasise the extraordinarily spacious dimensions of a Silverline floor, bringing out the natural effect of the spatial architecture and directing the light into the room.

Beautiful expansive large floors are very unforgiving when it comes to mistakes. This is why the Bauwerk master teams in Switzerland are responsible for making the individual planks in the Silverline Edition. Our experts guarantee exclusive quality with the utmost care.

The Silverline Edition is available in the following colours:



Silverline Edition – 2800 × 260 mm



The exclusive Silverline Edition planks are carefully selected by hand from particularly fine and straight-grown oak trees. Flawless planks of this length are rare. The oaks grow slowly and take decades for this format.



SILVERLINE EDITION

Oak Silver, calm

This shade brings inviting warmth and adds a comfortable note to every room. Hardly any other wood colour combines exclusivity and natural character so perfectly as Oak Gold.

SILVERLINE EDITION

Oak Gold, lively

A high-precision bevel was added on all four sides of the Silverline planks to further underscore the effect of their length.

SILVERLINE EDITION

Oak Farina, calm

Reference: Villa Breda, NL | Architecture: Baudoin, Van Alphen Bergers B.V. | Photo: René van Dongen

The 3-layer strip parquet with character

The generously sized Casapark 1-strip oak planks accentuate the individual mood of each room with their distinctive diversity.

Broad colour spectrum

The Casapark range is impressive thanks to its distinctive look with vibrant grades, exciting aged surfaces and modern range of colours. The oak planks offer a wide range of design options in the well-known Bauwerk quality – and at an extremely attractive price.

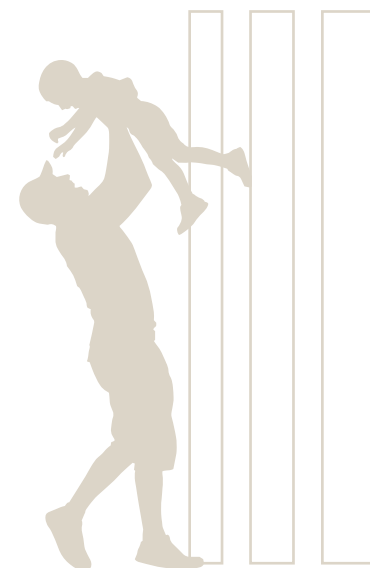
Distinctive variety

The Casapark 1-strip planks, in a generous length of 2200mm, are available in three different widths: 139, 181 and 209 mm. The lengthwise bevelling further emphasises these impressive dimensions. Depending on the product, the planks can be installed all in the same width or in a combination of different widths. Casapark is constructed in three layers, its 3.5 mm-top layer is well-suited for underfloor heating.

Casapark is available in the following colours:



Casapark Used-Look is available in the following colours:



Casapark – 2200 × 139/181/209 × 14 mm 139 181 209



Sasso: in line with the colour scheme and power of bright-coloured stone. The planks in this gentle tone bring the characteristic features of the wood to the forefront.

CASAPARK 209
Oak Sasso, lively

Marble and wood: a beautiful liaison of two natural materials that could not be more different. The rustic parquet floor takes away the cold touch of stone, by offering a warm contrast and creating so much more living comfort.

CASAPARK 209

Oak Farina, lively

The Casapark country house floorboards with a generous length of 2200 mm are available in three different widths: 139, 181 and 209 mm. The impressive dimension is additionally emphasized by the long side chamfering.

CASAPARK 209

Oak Ambra, lively

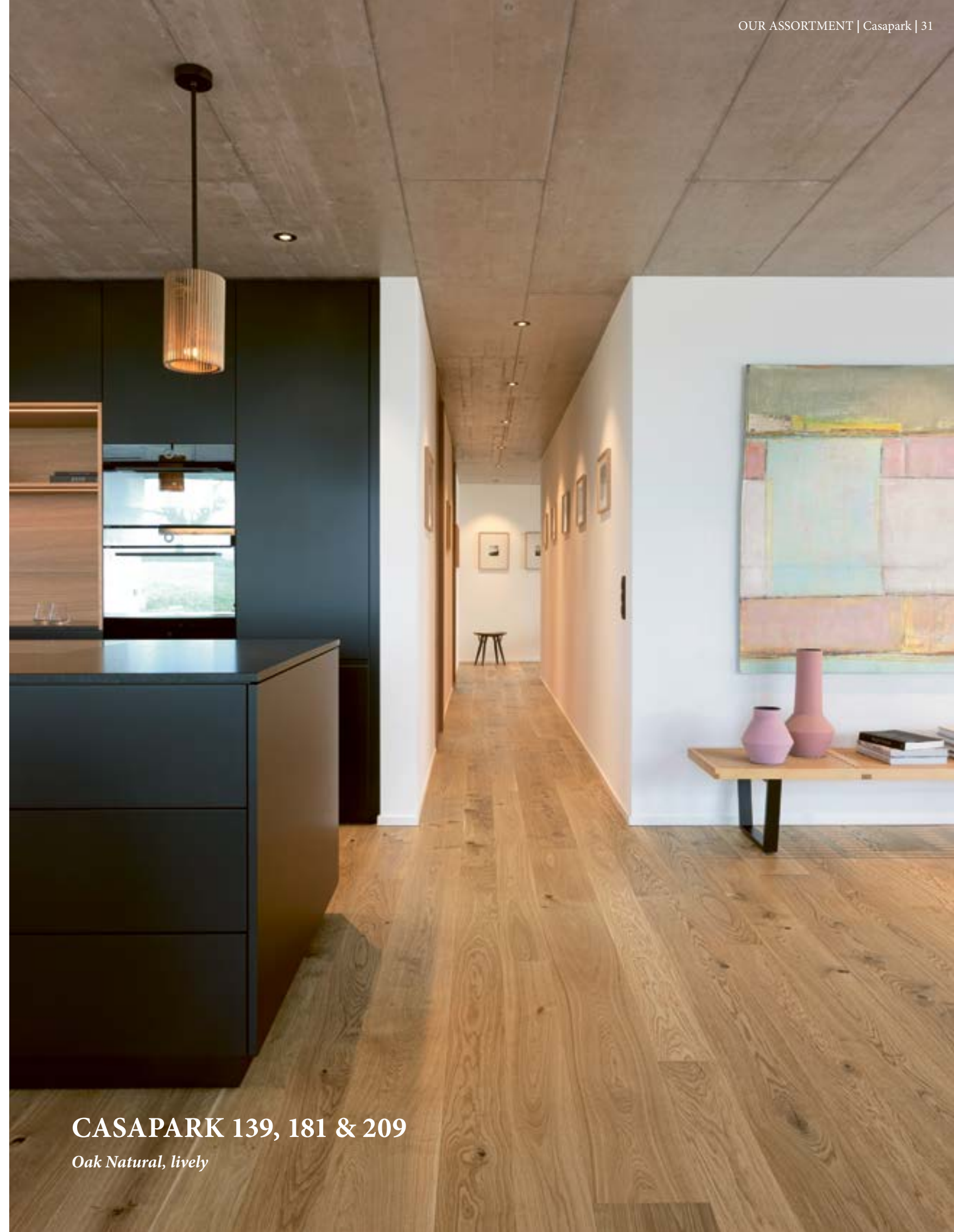
TERRACE HOUSE *Product:* Casapark Oak Natural in three widths
STETTEN *Architecture:* Baumgartner Partner Architekten AG
Builder: Private
SWITZERLAND *Floor installer:* René Bühler AG
Photos: Bruno Helbling

Living space for the aesthetically MINDED

The love of the house's inhabitants for good design, art, photography, literary and culinary art, as well as interior design, is invariably visible in every room: at the same time, the finely matched, harmonious colours, shapes, and materials provide an idyllic view over the surrounding landscape, turning it into a true eye-catcher.

Designed into nature

The unobstructed view of the Alps, the forests and the meadows was one of the reasons for buying the flat on the upper floor of the terrace house on the edge of Stetten, in the canton of Schaffhausen. The ability to freely design the interior space was another reason. The minimalist living space offers a perfect match for the simple architecture by Baumgartner Partner, offering a perfect stage for its owners who continually seek to express themselves creatively. With their distinctive variety and three different plank widths, the large Casapark 1-strip-planks highlight the unique atmosphere of each room. And thanks to its smart design and a 3.5 mm thick European oak top layer, the parquet works well with underfloor heating: a perfect thing to have when you want to look at hares and roes from your sofa in winter.



CASAPARK 139, 181 & 209

Oak Natural, lively

1-strip-planks for a sense of wellbeing

The large Villapark 1-strip-planks exude a warm and pleasant atmosphere and bring nature into your home.

Diverse and appealing to the senses

Every Villapark plank is unique and reflects the authentic beauty and structure of the different types and colours of wood. This healthy living parquet is the ultimate in versatility.

A sensual feeling when walking barefoot

The Villapark 1-strip-plank comes in the generous dimensions of 2100 x 190 mm. The planks are bevelled lengthwise, which emphasises their size even more. The characteristic brushing ensures a pleasant feeling when walking on them barefoot.

Bauwerk HDF technology

Villapark is based on HDF technology and has a resource-efficient 2.5 mm top layer. With its full-area bonding, the plank ensures a footfall as quiet as a whisper and optimal use of energy with floor heating systems. All Villapark products are tested by independent institutes and are perfect for healthy living.

High production standard 100 % from Switzerland

Villapark is produced at the Bauwerk headquarters in St. Margrethen. This way we can guarantee you get high-quality workmanship, precision, prudent handling of resources and the strictest quality controls. Perfect Swiss quality combined with pleasant and authentic surfaces.

Villapark is available in the following wood types and colours:



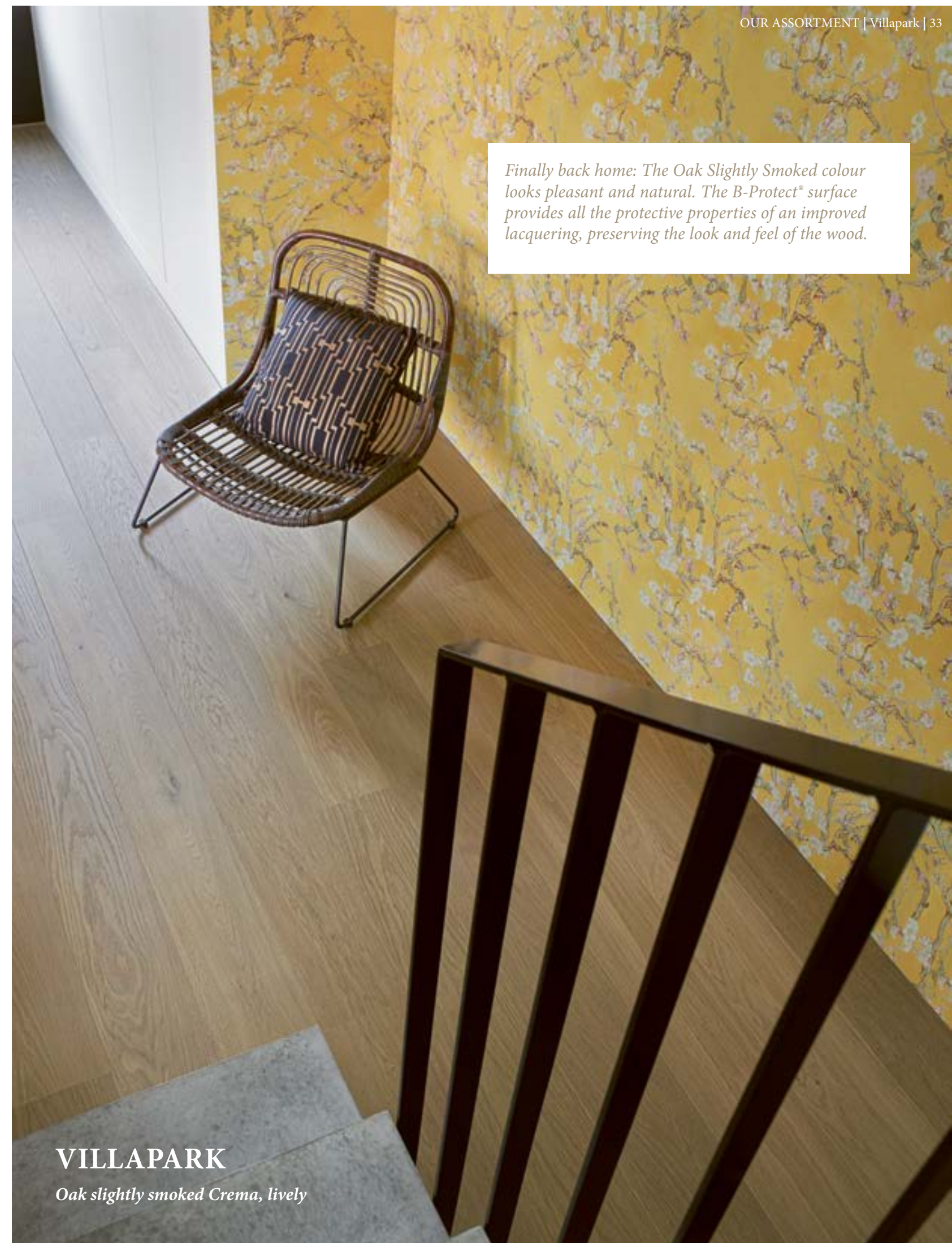
Villapark True Colours Edition is available in the following colours:



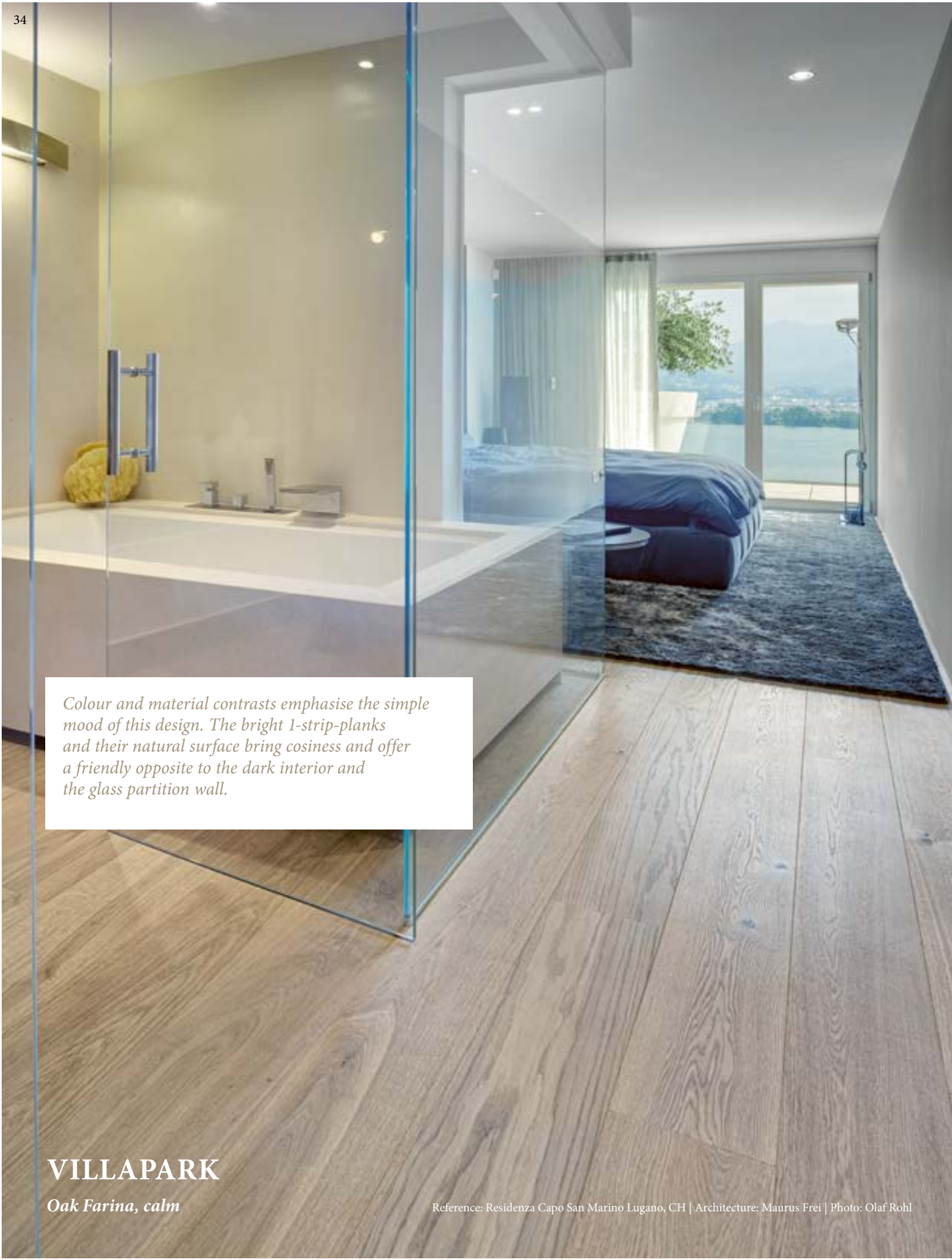
Villapark - 2100 x 190 x 9.5 mm



Finally back home: The Oak Slightly Smoked colour looks pleasant and natural. The B-Protect® surface provides all the protective properties of an improved lacquering, preserving the look and feel of the wood.



VILLAPARK
Oak slightly smoked Crema, lively



Colour and material contrasts emphasise the simple mood of this design. The bright 1-strip-planks and their natural surface bring cosiness and offer a friendly opposite to the dark interior and the glass partition wall.

VILLAPARK

Oak Farina, calm

Reference: Residenza Capo San Marino Lugano, CH | Architecture: Maurus Frei | Photo: Olaf Rohl



Lava is a slow force, with wild, determined energy. It fills rooms with timeless stability and provides floors with new diversity.

**VILLAPARK
TRUE COLOURS EDITION**

Oak smoked Lava, lively

**DETACHED HOUSE
LAKE GENEVA
SWITZERLAND**

Product: Villapark, Studiopark, Cleverpark 1250
Oak Natural
Architecture: Graber & Petter Architectes Sàrl
Builder: Privat
Floor installer: Page Christophe
Photos: Lionel Henriod

A gem of a house on LAKE GENEVA

The breath-taking view of Lake Geneva and the Swiss Alps alone was not enough to satisfy the residents of this detached house: they wanted to introduce a 'Scandinavian, modern, simple, yet cosy ambiance' into the typical 1970s architecture.

Harmonious interplay

While the overall form of the two-storey building remained the same, it now has a new shell made from vertical wooden slats as part of an extensive renovation by Graber & Petter Architectes. Indoors, subtle, targeted interventions were used to reinterpret existing elements in order to emphasise what already was there, and to fully reveal the spaces throughout the house. The resulting experience is that of spacious, flowing rooms that are open to the landscape. The 198-square-metre living space got the desired Nordic flair not only through white surfaces but also, importantly, through the consistent use of light-coloured wood: oak (built-in) furniture and floors contribute significantly to the impression of the rooms being flooded with light. The carefully matched combination of Villapark and Studiopark 1-strip planks with Cleverpark long-plank parquet in particular helps to create a warm atmosphere of natural well-being.



"We wanted sustainability and healthy living in our house, with a logical and simple flow to it. The architects achieved this wonderfully."

Owner of the property



VILLAPARK

Oak Natural, lively



True luxury means having space and the time to enjoy it. More and more people are creating their own personal aesthetic freedom with the finest materials and textures, exclusive lines and elegant colours – their small oasis in the everyday hustle and bustle of life.

VILLAPARK
Oak slightly smoked Cacao, lively



Villapark Oak Crema in a lively grading works well both in a country house or in a modern loft: the cool visible concrete ceiling creates a contrast, strengthening the effect of the authentic wood planks in this example.

VILLAPARK
Oak Crema, lively

The 1-strip plank that fits in every room

Studiopark offers top flexibility in popular colours. Bauwerk Parquet is versatile and talented in creating perfect, attractively priced one-strip planks.

Making small rooms visually larger

The 1700 × 150 mm Studiopark 1-strip plank is also ideal for installing in smaller rooms. Studiopark planks give every room that special touch with their contemporary choice of colours. Studiopark is based on HDF technology and has a resource-efficient 2.5 mm-top layer. The length of the plank is subtly accentuated by its bevelled longitudinal edge, creating an open roomy effect.

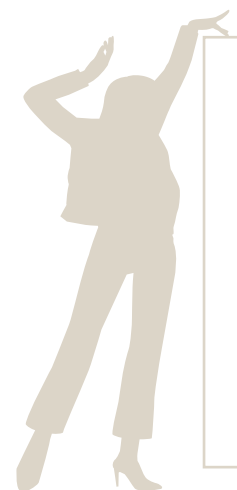
Top-quality and variety

Thanks to its low installation height, the Studiopark range is ideal for renovations and ensures optimum energy efficiency with underfloor heating systems. Studiopark 1-strip planks are made in Switzerland, tested by independent institutes and completely suitable for living healthy.

Studiopark is available in the following colours:



Studiopark – 1700 × 150 × 9.5 mm



Discover a new source of well-being! A bathroom in harmonious natural and wooden tones always feels pleasantly warm. If the walls and floor are made of real wood, the room temperature you feel is one or two degrees higher than it actually is.

STUDIOPARK
Oak smoked, calm

The metropolis pulses with life, always discovering something new from diverse influences, cultures and ideas becoming trends. Living space in a city is limited, but inexhaustible creativity is a source of maximum comfort in the smallest of rooms.

STUDIOPARK
Oak Natural, lively

Exciting and unusual: From tabletops in faded gold and white marble to retro armchairs upholstered in 'in lemon yellow'. The colour crema, the rustic grading and the format of the Studiopark boards are the icing on the cake. Thanks to B-Protect® surface treatment, the light floor is also very easy to clean!

STUDIOPARK
Oak Crema, rustic

FORMPARK & FORMPARK MINI

Creative laying patterns

Our innovative parquet format instantly conquered the interior design market. The brilliance of Formpark is in its simplicity consisting of two plank formats, which means that with Formpark, you can conceive countless environments for your room.

Individuality and diversity of form

Depending on the installation method and the lighting conditions, Formpark can be laid in different patterns. Smooth transitions from one pattern to another are also possible. With Formpark, living spaces can be designed in an even more custom way. The originator of the Formpark concept is Stephan Hürlemann, an architect and designer from Zurich. Together with designer Simon Husslein, he developed this exclusive authentic-wood flooring for Bauwerk Parquet.

Formpark: a new concept for parquet

Being unique and simple the 1:3 and 1:2 proportions of its planks, Formpark can be laid in both a parallel and an orthogonal pattern, creating architecturally inspired patterns and maximum design freedom.

Formpark Mini: a great deal of creativity for small surfaces

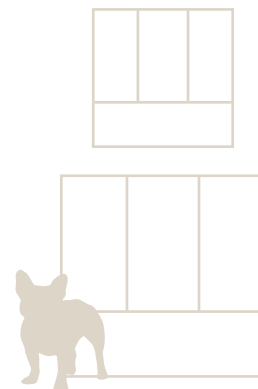
An evolution of the Formpark format offers countless options for creatively laying parquet in smaller areas. The characteristic Formpark Mini shares with its larger sibling is the unconventional look it lends to every room, based on the installation method and the lighting conditions.

Discover its countless laying patterns on our website:
bauwerk-parkett.com > Formpark

Formpark und Formpark Mini are available in the following colours:



Formpark – 520 × 260 × 11 mm
780 × 260 × 11 mm
Formpark Mini – 380 × 190 × 9.5 mm
570 × 190 × 9.5 mm



Formpark opens up a whole range of different patterns and floor typologies, with a lot of space for custom designs. This exclusive parquet floor impresses with its architecture, poetry and consistency.

FORMPARK MINI 570 & 380

Oak Natural, calm, pattern N° 26

Reference: Apartment with a view of the port, Vloerenhuis Amsterdam, NL | Photo: Charlotte Kap

Small format, big effect: Formpark Mini is about patterns inspired by architecture, as well as freedom of design, even in smaller spaces.

FORMPARK MINI 570 & 380

Oak smoked, calm, pattern N° 21

With Formpark, diverse patterns emerge, from calm to lively, from classic to avant-garde, based on the way parquet is installed and lighting conditions. Smooth transitions from one pattern to another are also possible.

FORMPARK 780 & 520

Oak Natural, calm, pattern N° 7

FORMPARK QUADRATO

Countless installation options

Formpark Quadrato lends itself for use in classic herringbone as well as many other patterns. These laying patterns impress with their timelessness and simplicity. At the same time, these patterns make an individual statement in every room, producing a unique effect.

Diversity of patterns

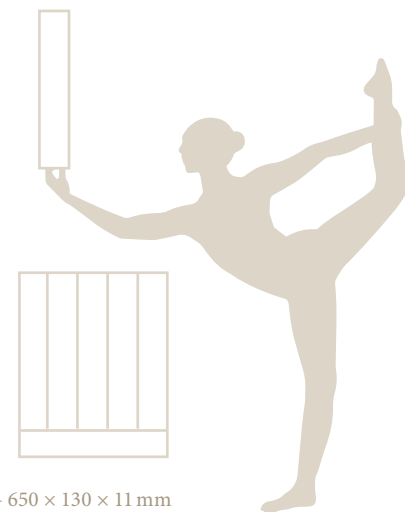
Thanks to the 1:5 dimension ratio of its planks, Formpark Quadrato can be adapted to many different floor designs. Therefore, in addition to classic herringbone, in which the planks lie at a right angle to each other, other geometric patterns are possible, like the cube or ladder patterns.

Outstanding fit

Creative patterns in floors do not forgive mistakes. For this reason, the individual Formpark Quadrato planks are made by our master craftsmen in Switzerland. Formpark Quadrato is available in light and dark colours with a natural-oiled surface, as well as in the Oak Crema colour with the innovative B-Protect® surface treatment. The planks in this format are square-edged, creating a smooth, flatter appearance to the floor.

Discover their countless laying patterns on our website: bauwerk-parkett.com > Formpark Quadrato

Formpark Quadrato is available in the following colours:



Formpark Quadrato – 650 × 130 × 11 mm

Visually, the B-Protect® surface hardly differs from natural, untreated wood; functionally, it offers all the advantages of a classic lacquer coating.



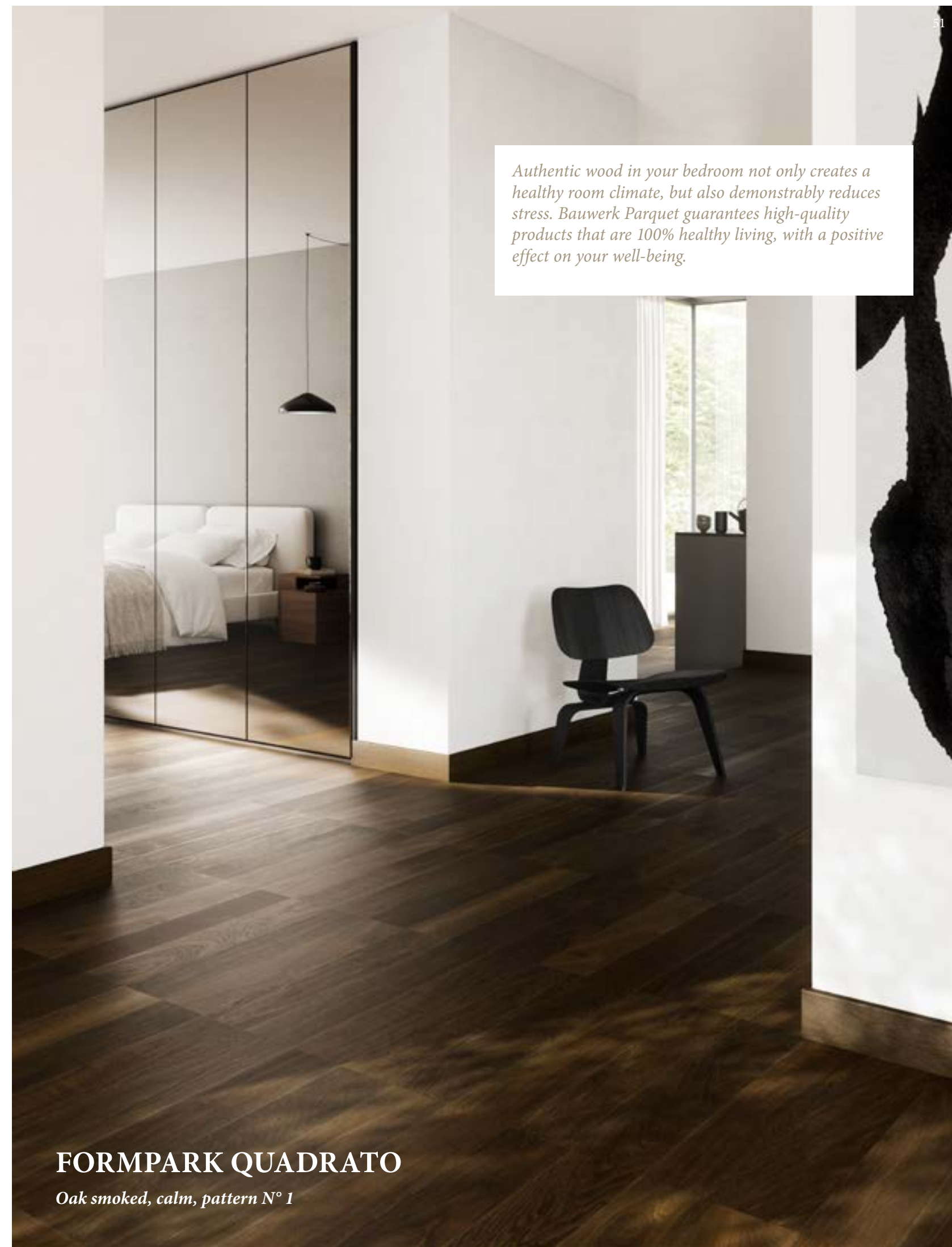
FORMPARK QUADRATO

Oak Crema, calm, pattern N° 9



FORMPARK QUADRATO

Oak Caramello, calm, pattern N° 12



Authentic wood in your bedroom not only creates a healthy room climate, but also demonstrably reduces stress. Bauwerk Parquet guarantees high-quality products that are 100% healthy living, with a positive effect on your well-being.

FORMPARK QUADRATO

Oak smoked, calm, pattern N° 1

FORMPARK ROMBICO

French herringbone and other patterns

Thanks to the 45° angle of its individual strips, Formpark Rombico is perfect for installation in a French herringbone pattern. The large dimensions of some of the planks make it possible to create other patterns also whether you prefer clearer forms or are looking for a more dynamic zig-zag design.

French herringbone

French herringbone, also referred to as chevron pattern, has recently seen a major revival among interior designers. This version of herringbone pattern looks even more elegant than the classic variant and works particularly well in larger rooms.

A smooth look

All Formpark Rombico colours are brushed and natural oiled. The brushed surface gives the floor even more depth and character, highlighting the interaction with light. The Planks are square edged creating a smooth, flatter appearance to the floor.

Discover their countless laying patterns on our website:
bauwerk-parkett.com > Formpark Rombico

Formpark Rombico is available in the following colours:



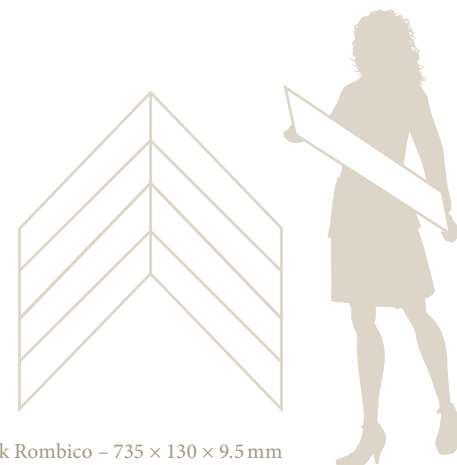
Oak Farina



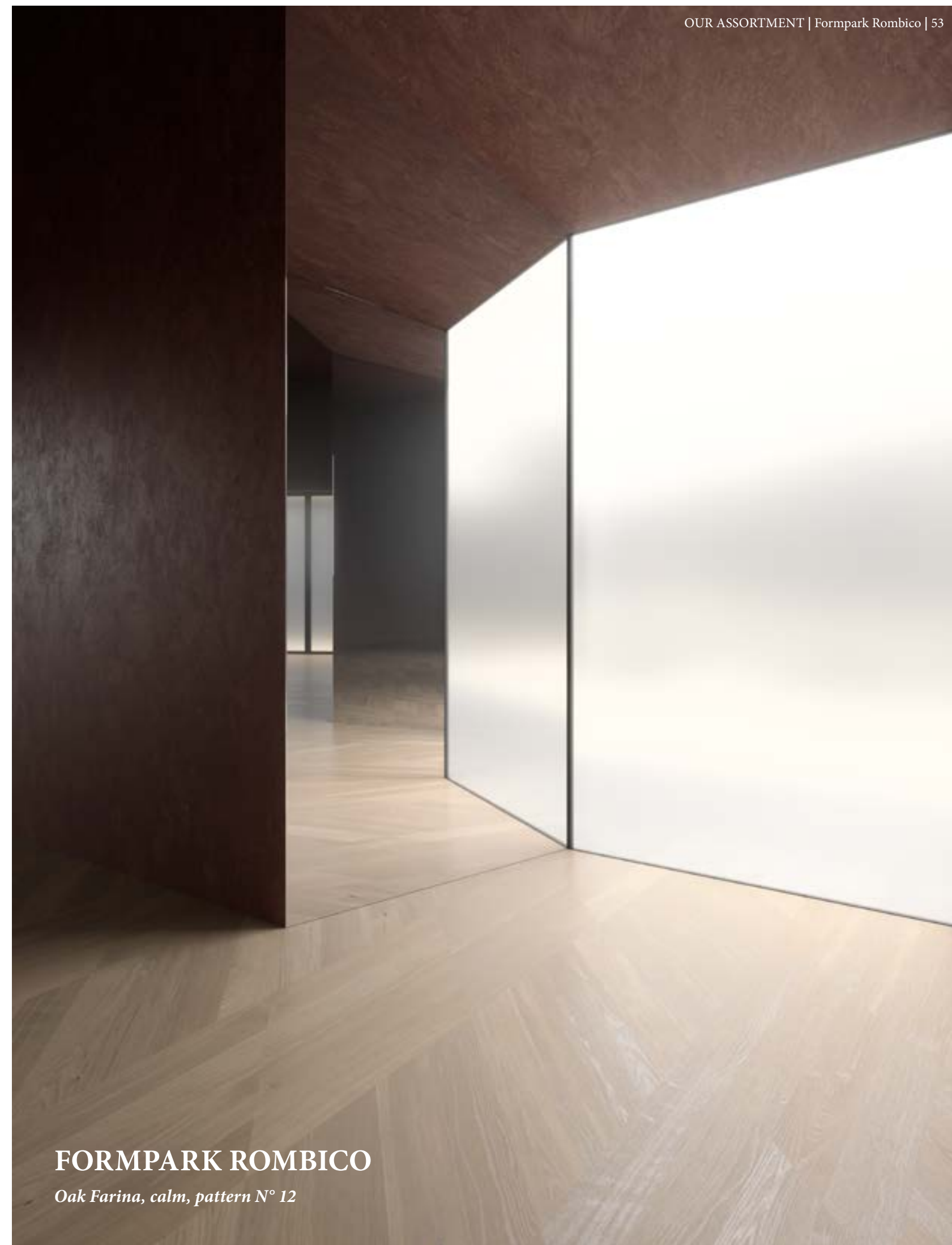
Oak Natural



Oak Mandorla



Formpark Rombico – 735 × 130 × 9.5 mm



FORMPARK ROMBICO

Oak Farina, calm, pattern N° 12

REMISE	Product:	Formpark Rombico, Oak Farina
BERLIN	Architecture:	–
GERMANY	Builder:	Private
	Floor installer:	S.W. PARKETTDESIGN GmbH
	Photos:	Sabine Zoltner

The dream of your OWN FOUR WALLS

For six years, the small family lived in the rented remise-style workshop building in Berlin-Zehlendorf, and kept imagining how nice it would be if they owned the two-storey building. And one day, this finally became a reality: by purchasing the property, they could finally implement their plans that had been brewing for so long.

Unifying element

The owners put emphasis on adapting the living space to their standards of sustainability and healthy living, which, among other things, meant replacing the stone floor with authentic-wood parquet. French herringbone pattern now covers 100 square metres, not only in the entrance area and the hallway, but also in the open living room with kitchen and dining spaces, as well as the guest and work rooms. Formpark Rombico in Oak Farina colour was also laid with high precision on the stairs connecting the ground and upper floors. The brushed and oiled surface gives the parquet more character, highlighting its interplay with the lighting. In addition to the pleasant tactile features and the timeless design, its clear design language emphasises this cohesive manifestation of a dream to have their own home finally coming true.

"We feel very happy and satisfied with the new floors. For us, the decision meant a significant improvement in the quality of our house. And we will soon extend this pleasant feeling to the upper floor."

Owner of the property



FORMPARK ROMBICO

Oak Farina, lively

Unconventional and trendy

Anything but average: the Trendpark product line, with its generously sized planks, offers unique surfaces for a wide variety of interior designs.

Whether it is the Used-Look optic or the unique color shades: as the largest format without bevels, Trendpark offers a flat look as well as a diverse range of colors.

Longplank: suited to rooms of all sizes

The long-plank format works equally well in small and big rooms. The great diversity of colours, surfaces and structures makes long-plank parquets an ideal choice for a broad range of different spaces. Various Trendpark products, such as those with a Used-Look surface, can add even more individual character. Because of their appearance, these floors make a perfect companion for a modern interior style with personality (see p. 82).

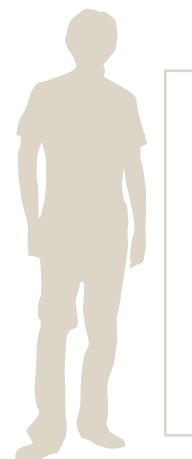
Trendpark is available in the following colours:



Trendpark Used-Look is available in the following colours:



Trendpark –1450 × 130 × 11 mm



Be it a Used-Look or unique shades of colour: As the largest unbevelled format, Trendpark offers a spacious look and a diverse spectrum of colours.

TRENDPARK
Oak Tabacco Used-Look, calm

DETACHED HOUSE
REHETOBEL
SWITZERLAND

Product: Trendpark & Unopark Oak Natural
Architecture: firm Architekten, Speicher (CH) and Lustenau (AT)
Builder: Private
Floor installer: Rolf Waldburger AG
Photos: Jürg Zimmermann

DIALOGUE

between the old and the new

The striking building perched in the natural landscape of Appenzellerland, with a view of St Gallen, has had an eventful history: a schoolhouse for children at first, it later became full of the hustle and bustle of an embroidery workshop. Today, it is a home, which can also provide weekend getaways for tourists.

Traditional, clear, and surprising

The over 150-year-old three-storey building has been carefully renovated, with new tile roofing, a new spruce shingle cladding on the façade, and new muntin bar windows. The stairwell was relocated with rearranged connections between the storeys in order to create a small guest apartment on the ground floor, with a separate entrance. The kitchens and bathrooms were thoroughly renovated, but the architect Christian Feldkircher put a lot of value in preserving the stories of decades and decades of use, and traces of history. As a result, new and old flooring fit harmoniously together: Trendpark and Unopark were used to complement the existing wooden floor, creating a charming atmosphere in the rooms.

"This project involved an exciting dialogue between the new and the old. And for us, it was important to juxtapose the two in a balanced way, through clear design language."

Christian Feldkircher, firm Architekten



TRENDPARK & UNOPARK

Oak Natural, lively

The classic all-rounder

Cleverpark planks, available in two different lengths, suit every room and offer a diverse range of colours, wood types, surface treatments and installation options.

Cleverpark 900 is available in the following colours:



Cleverpark 1250 is available in the following wood types and colours:



Countless applications

The Cleverpark format is an ideal solution for every taste and every living situation. Be it a compact children's room in the classic ship deck pattern for a cosier mood, or a spacious loft with something more creative, Cleverpark is always an eye catcher.

Classic and creative patterns

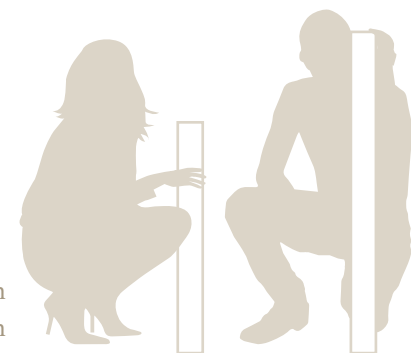
Long planks impress with the large variety of classic and creative patterns for a very personal room experience! Whilst the 1250 mm long plank is commonly installed in the popular ship deck pattern, the 900 mm Cleverpark plank is the longest plank in our range that can be used for the herringbone pattern. With its clever 1:9 dimension ratio, it can be used for many other classic and modern laying patterns.

Excellent value for money

Produced at our main facility in Switzerland, Cleverpark parquet stands out for its high-quality machining and precision, as well as careful use of resources and the strictest quality checks, giving great value for money.

Healthy for people and nature

The brushed version of the plank is a real joy to walk on with bare-foot. Cleverpark is based on HDF technology, with a 2.5 mm resource-saving top layer. With full-surface bonding, the planks ensure less foot sound, and deliver optimum energy consumption for under-floor heating.



Cleverpark 900 – 900 × 100 × 9.5 mm
Cleverpark 1250 – 1250 × 100 × 9.5 mm



CLEVERPARK 900
Oak Caramello, lively, pattern N° 1

As an additional option, Cleverpark 1250 is also available with innovative Silente technology. This provides a sound insulation mat that significantly reduces walking and impact sounds. For a pleasant working atmosphere in open-plan offices and a quieter life with children in multi-storey buildings.

CLEVERPARK 1250

Oak smoked, calm, pattern N° 5

CLEVERPARK 1250

Oak Creta, calm, pattern N° 3

RUSTICO	Product:	Cleverpark 1250, Oak Sasso B-Protect*
MANNO	Architecture:	Fabio Compagno / compoone
SWITZERLAND	Builder:	Private
	Floor installer:	Veragouth SA
	Photos:	Elisa Florian

Designing interiors WITH WOOD



In Tessin, rustico buildings were traditionally used by farmers, and today, for now at least, they have become the epitome of modern living. While on the outside, their architecture offers remarkable and robust masonry, on the inside, they impress with an exciting spatial structure, which mostly consists of wood.

Traditional and modern

The renovation of the old, empty building in the centre of Manno presented the architect Fabio Compagno with the special challenge of using the existing geometry of the former farmhouse as efficiently as possible, providing its residents with a layout that creates as much space and function as this building possibly can. The existing stone wall on the southern side of the structure was kept and reinforced, and the other walls were replaced with a modular wood structure, while a few existing openings were rearranged for better lighting. For the interiors, the architect and the owner of the property decided to make the wooden structure visible. As a result of this approach, the walls and ceilings, as well as built-in furniture and closets, were constructed using raw spruce panels.



Warmth and wellness

Cleverpark parquet was laid across the 90-square-metre living space as a fitting addition to the concept. "Like the rest of the building, the floor needed to be made out of wood. Sustainable, durable and healthy for living, it harmoniously blends into the general picture," Fabio Compagno explained, citing the reason for choosing parquet. "The Oak Sasso colour makes the floor gently stand out from the natural wall panelling. The grain of the wood isn't excessively distinctive, while the material itself offers a pleasantly warm, tactile experience." Because there are plans to let the property out, the flooring had to be robust and easy to maintain, which is why additional protection from the innovative B-Protect* lacquer was opted for, so that the original look of the surface endures many years of use.



CLEVERPARK 1250

Oak Sasso, lively

APFELHOTEL TORGGLERHOF SOUTH TYROL	Product:	Cleverpark 1250, Oak slightly smoked Crema
	Architecture:	noa* - network of architecture
	Builder:	Family Pichler
	Floor installer:	Simonazzi GmbH, Völs am Schlern
	Photos:	Alex Filz

A BLISSFUL BREAK

close to Nature

Nestled among apple orchards, meadows and mountains lies the Apfelhotel Torgglerhof in Passeiertal, South Tyrol, a hotel that has been extensively renovated and expanded, making it a place to spend delightful holidays. Here, modern design meets high-quality natural materials, such as authentic wood parquet by Bauwerk.

Much attention to detail

At the Apfelhotel, a young generation of hoteliers have sought to turn a fantastic location steeped in history into a special kind of holiday haven. Together with the noa* architecture and design firm from Bozen, they have created a hotel that is close to nature and boasts fine dining and wellness facilities that stimulate the senses and pamper guests.

Successive renovations and expansions to the original structures have taken place over the last few years, with a great deal of charm and attention to detail. In 2020, three new detached buildings were constructed in the eastern part of the complex to form the Garden suites, consisting of 18 new rooms for guests. For this project, noa* adopted the language of the surrounding traditional architecture and reinterpreted it with an unconventional wooden façade.

A wellness retreat among apple trees

Nature plays a vital role inside the spacious Garden suites and lofts. Large amounts of wood, natural textiles and earthy tones define the cohesive interior design in these spaces. The parquet by Bauwerk installed in the suites is a perfect fit. "Right from the start, we knew that we had to have real wooden floors," explained Maria Pichler, the young owner of the hotel. "Parquet brings value, creates the right mood and gives our guests a sense of nature and wellness with every step they take."

Nature at every turn

The hotel is fitted out with Villapark and Cleverpark parquets, both in slightly smoked Oak Crema wood type and colour, with a lively grading and longitudinal bevels. Both of these parquet floors were made with top precision at BauwerkParquet's main facility in St Margrethen. Villapark captivates with its magnificent 1-strip-plank format, featuring planks that are over two metres long. Independent testing institutes have shown that Bauwerk Parquet's solutions are perfectly and demonstrably healthy for living. The B-Protect® lacquer used for the project protects the natural beauty and matte look of the wooden floor, also making it very easy to maintain.



CLEVERPARK 1250

Oak slightly smoked, lively

Reference: Apfelhotel Torgglerhof Südtirol, AT | Architecture: noa* - network of architecture | Photo: Alex Filz

STRIP PARQUET

For classical or modern productions

Strip is the traditional parquet classic. With its large variety of colours, surfaces and types of wood, Bauwerk's strip parquet range offers maximum flexibility for impressive room styles, from traditional to modern. And all that high quality comes at a compelling price.

Unopark – the classic for herringbone installation

Unopark is the versatile classic in various colours and surfaces, suitable for installation in herringbone – but also shipdeck-pattern. Whether in oak, maple or acacia, all Unopark products can be installed in the classically elegant herringbone pattern, bestowing a very special ambience to every room. Surfaces in the Used-Look or slightly brushed finish for a pleasant "barefoot feel", offer further possibilities for customisation.

Monopark – the versatile parquet for first-timers

Monopark is manufactured with wood from controlled sources in Europe. Its compact design and excellent value for money make it a truly impressive option. This popular strip, available in three surface treatments, different wood types and a wide range of colours offers so many versatile possibilities, which is particularly great for properties. Monopark is based on HDF technology and has a resource-efficient top layer of approx. 3 mm. Monopark parquet is also available with a cork sublayer for impact sound insulation and is ideal for installing on underfloor heating systems.

Solopark – the classic product for project business

Solopark comes in a classic short-strip format with oak products in various colours. The Solopark-assortment has its focus on project business and offers a compact but attractive colour-range on three surfaces: matt lacquer, natural oil and B-Protect®. The top layer is made from European oak.

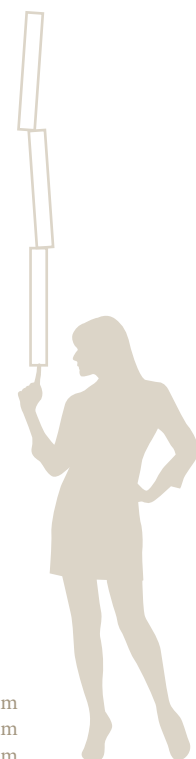
The strip format is available in the following wood types and colours:



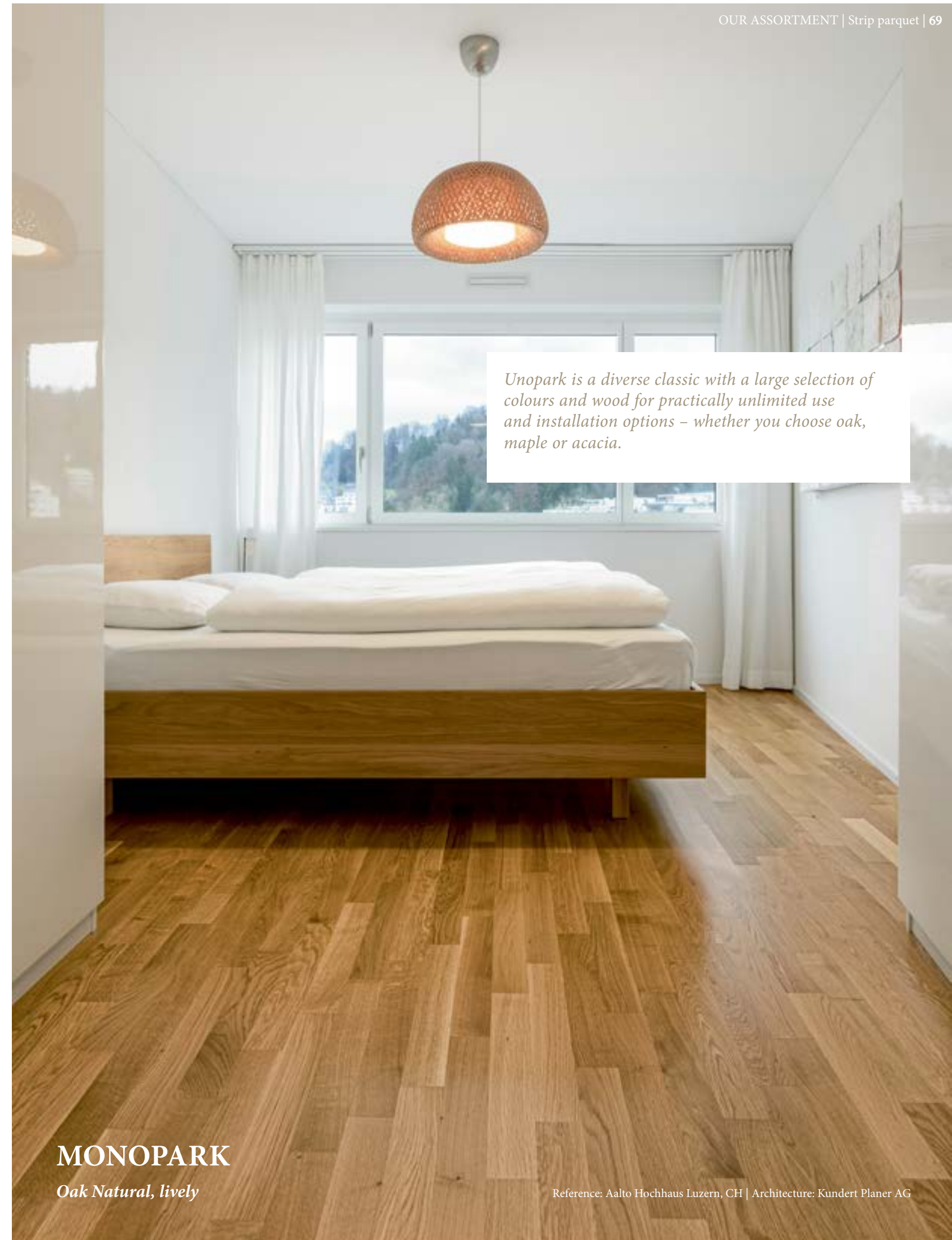
The strip format Used-Look is available in the following colours:



Unopark – 470 × 70 × 11/12.5 mm
Solopark – 470 × 70 × 10 mm
Monopark – 470 × 70 × 9.6 mm



Unopark is a diverse classic with a large selection of colours and wood for practically unlimited use and installation options – whether you choose oak, maple or acacia.



MONOPARK
Oak Natural, lively



UNOPARK
Oak Natural, calm

Reference: T Residence Macau, CN | Architecture: Christine Choi & Jimmy Wardhana



UNOPARK
Oak Avorio, calm

Reference: Gasthaus Badhof Meggen, CH | Architecture: GKS Architekten & Partner AG | Photo: Sabrina Scheja

MULTI STRIP PARQUET

Parquet elements with a ship deck look

The practical multi-strip floor that's reminiscent of a ship deck guarantees quick installation and offers many options for room customisation thanks to the large variety of wood types. The multi-strip formats impress with the amount of value you get for your money, and work well in smaller rooms, thanks to their dimensions.

Triopark

The Triopark range is available in three wood types: maple, beech and oak. The format was created for floating installation, whereby no adhesive is used, and the planks are fastened to each other using 5G latching joints, for precise results in the shortest time. Triopark is a 3-layer parquet that is well-suited for underfloor heating and is the way to create the popular ship deck appearance to your floors.

Multipark

Multipark is also quick to install in the classic strip pattern, but unlike Triopark, it is bonded to the subfloor, for very good heat conductivity characteristics and optimum use of energy by the underfloor heating. Multipark, a 2-layer parquet, is manufactured at our main facility in St Margrethen, Switzerland and is available in two different structural options, with a fir/spruce base, or a resource-saving HDF sublayer. Multipark is also available with the innovative Silente technology, for reduced footstep noise and ambient sound in the rooms below.

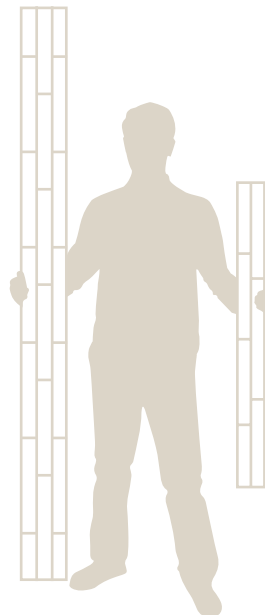
Triopark is available in the following wood types and colours:



Multipark is available in the following wood types and colours:



Triopark – 2200 × 215 × 14 mm
Multipark – 1200 × 140 × 9,5/10/12.8 mm



MULTIPARK
Oak Natural, calm

SOLID PARQUET

For a timeless industrial look

The history of Bauwerk Parquet began in 1935 with the invention of building-block or mosaic parquet. Its timeless industrial look also comes with high durability and extreme longevity.

Prepark – the practical solid floor

Prepark is a durable, pre-lacquered traditional Bauwerk product that can be used to easily install different patterns. This solid parquet in the classic industrial look is also available with a cork sublayer for improved impact sound values. Prepark is made of wood from a controlled source, it is inexpensive, efficient to install and extremely durable. In addition to this, Prepark is ideal for installing on underfloor heating systems.

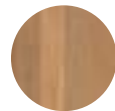
Solid parquet – a long-lasting piece of Bauwerk tradition

Even though more than 80 years have passed, the pioneering building block parquet from Bauwerk still prevails. The durable, unfinished Adhesive Parquet in a timeless industrial look is suitable for various installation patterns and is available in numerous gradings. The Adhesive Parquet, with a top layer made from European oak, is 100% FSC® certified, as the name already suggests, it is bonded to the entire area. It is also ideal for installing underfloor heating systems.

On-edge – solid and resilient

On-edge parquet is a classic, extremely durable traditional Bauwerk product in a timeless industrial look. The hardwearing, solid On-edge parquet is 100% FSC® certified and comes in two thicknesses. The top layer is made from European oak, it is supplied unfinished and can be processed with all surface treatments. On-edge parquet is ideal for installing on underfloor heating systems.

Solid parquet is available in the following colour:



Oak
Natural



PREPARK

Oak Natural, lively, parallel

WOODEN ACCESSORIES

Elegant down to the last detail

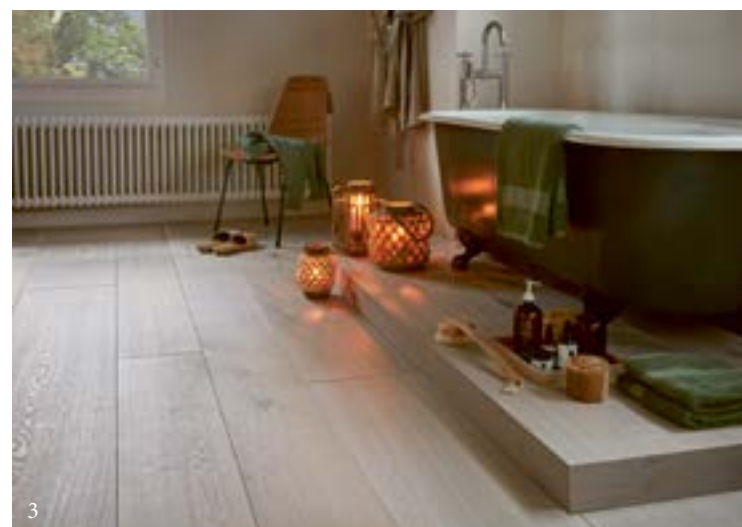
Bauwerk Parquet offers many options for customising your living space: from stairs to skirtings, ventilation grilles and custom products.

Elegantly integrated stair solutions

Stairs are more than just a way of accessing the upper floors: they are a design element that is rich in detail and has a great deal of influence on the ambience of a living space. In addition to the architecture and structure of a staircase, its finish also plays a critical role. Our Swiss-made stair solutions have a decisive advantage: the parquet floor and the stairs can have the same colour and surface treatment, as well as the same level of gloss.

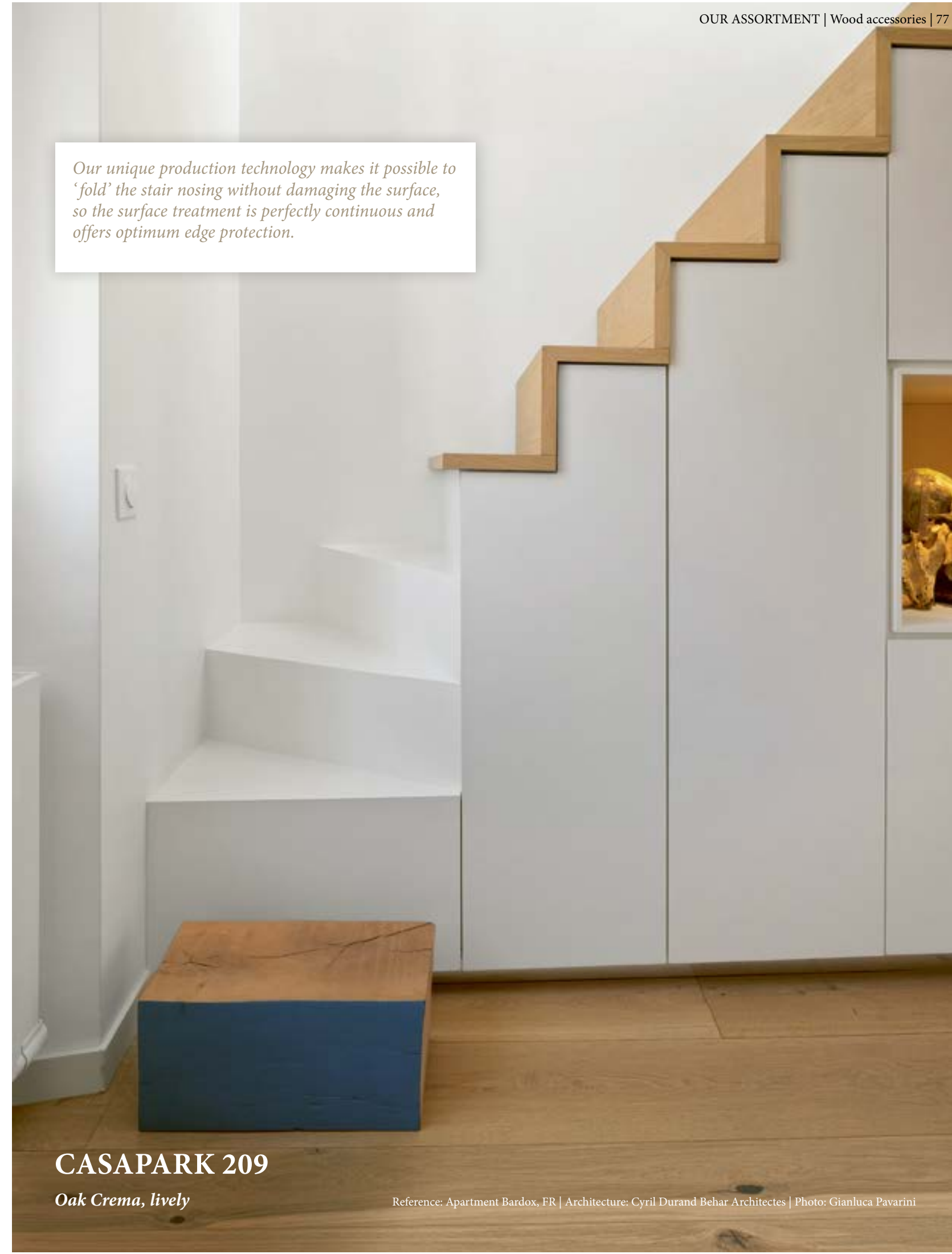
Rich variety of design options with parquet

Wood is flexible and welcomes change, making it the perfect material for personal creativity in living spaces. Perfect your interior design with a love for detail. Be it skirting boards, ventilation grids, wall and ceiling panelling or even custom furniture: with their various elegant solutions and well-designed accessories, products by Bauwerk Parquet can be used to realise virtually any idea.



- 1 | Wand und Decke aus Cleverpark 1250 Oak Nature | Reference: Mountain Villa High Tatras (SVK) | Photo: Jozef Kolcún
- 2 | Bench from Villapark Oak Mandorla | Reference: House Balgach CH | Photo: Carole Arbenz
- 3 | Plattform from Unicopark Oak Farina

Our unique production technology makes it possible to 'fold' the stair nosing without damaging the surface, so the surface treatment is perfectly continuous and offers optimum edge protection.



CASAPARK 209

Oak Crema, lively

Reference: Apartment Bardox, FR | Architecture: Cyril Durand Behar Architectes | Photo: Gianluca Pavarini

Effective formats for every room

The format, the laying direction and the pattern of a parquet floor have a huge influence on the spatial effect: not only can it change spaces visually, but it can also create transitions, influence the play of light, set contrast points or serve as a simple stage for architecture and interior design.

Product	Surface	Oak Caramello	Oak Creta	Oak Tabacco	Oak slightly smoked	Oak Deserto	Oak Nuvola	Oak Sasso	Oak Pietra	Oak Roccia	Oak Fango	Oak Ambra	Oak Grano
		Unicopark	nol										
Unicopark Handcrafted	nol												
Silverline Edition	nol												
	bpr												
Casapark 209	nol							27				29	
	bpr												
Casapark 181	mvs												•
	nol			25				•	•		•	•	
	bpr												
Casapark 139	mvs												•
	nol							•					
	bpr												
Villapark	mvs												
	nol												
	bpr							•					
Villapark, True Colours Edition	nol					93			21				
Studiopark	mvs												
	nol		23										
	bpr												
Formpark Formpark Mini	nol												
Formpark Quadrato	nol	3 50											
	bpr												
Formpark Rombico	nol												
Trendpark	mvs												
	nol			57	•	•							
	bpr							•					
Cleverpark 1250	mvs												•
	nol		63		76								
	bpr							15 65					
Cleverpark 900	mvs												
	nol	12 61											
	bpr												
Unopark Solopark Monopark	mvs							71					•
	nol			•	69	•							
	bpr												

mvs = mat lacquered
 nol = natural oiled
 bpr = B-Protect*

The character of wood

The art of producing parquet is in achieving the most balanced, reliable grading possible. Wood is a multifaceted natural product, and each strip is unique.

The grading index categorises strips using the numbers 1 to 6. These stand for wood-specific features, such as mirrors (cut medullary rays), small and large branches, sapwood (usually the lighter edge zone of the trunk) and different colour variations. The rule of thumb is: the smaller the number, the smoother the wood – the bigger the number, the more rustic the wood.

12/13 = very calm, 14 = calm, 15/24/34/25/35 = lively, 45/46 = rustic

Oak Fumo	Oak Farro	Oak Fulvo	Oak black limed	Walnut American	Acacia steamed	Oak smoked Crema	Oak Caffè	Oak Mocca	Oak smoked Lava	Oak slightly smoked Cacao	Oak smoked	Oak smoked Farina
•							•					
		21								•		
			•								•	•
			•								•	
				•							•	
	•									38	•	
									35			
	•										•	41
												46
											8 51	
								•			•	
											7 15	•
				•				•			•	
	•			•						•	62	
				•	•						•	
				•	•						•	

THE RIGHT SURFACE

for your lifestyle

Bauwerk Parquet's range includes products with different surface treatments. They protect wood from wear and dirt, and provide for 100 % healthy living.

Natural oiled parquet: appealing to the senses, natural, easy to repair

The matte look and authentic feel of this treatment will appeal to all of your senses. The highly durable, breathable surface accentuates the natural appearance of the wood and is very easy to repair. While a natural-oiled floor requires some care, it is worth the effort thanks to its high resistance to soiling.

Mat lacquered: practical, durable and functional

This high-quality lacquering adds a silk-matte sheen, highlighting the fine features of the wood and protecting it even under the most demanding conditions. This highly durable and extremely easy-to-care-for surface treatment with resistance to soiling makes a natural floor fit for any living environment.

B-Protect®: a natural surface with invisible protection

This unique surface treatment creates a raw-surface appearance combined with a natural dull-matte look and all the advantages of traditional lacquering. This innovation by Bauwerk provides durability and ease in maintenance. The wood shows minimal discolouration, even with prolonged exposure to light.

Used-Look – Parquet that tells stories

The patina makes the structure of the wood clearly visible, creating a unique charm that captivates and elicits dreams of bygone days. It is exactly because of this used appearance that these floors are a perfect choice for a modern interior style with personality.

The manufacture

Used-Look surfaces are made thanks to an elaborate process, developing their unmistakable character in an enormous bath. The planks are thoroughly washed with pyramid-shaped stones, similarly to the production of faded jeans. Then, the planks undergo special processing with mordants, creating unique traces of patina and use.



Used look is available in the following colours and formats:



Tabacco

Casapark
Trendpark
Unopark



Deserto

Trendpark
Unopark



Fango

Casapark



CASAPARK 181

Oak Tabacco Used-Look, rustic

"Next" colour technology

Interior designer Gesa Hansen loves wood as a material, its smell and texture, its natural character. She has created the unique True Colours Edition in cooperation with Bauwerk Parquet, inspired by nature and its elements.

Intense depth effect

The colours of the True Colours Edition are applied using the innovative "Next" technology, specifically developed by Bauwerk Parquet. This multi-layered coating makes the pores, structures and grading of real wood even more distinctive. There is a distinctly natural look, highlighting the originality of the True Colours Edition and the unique character of every plank, in all its facets.

Unicopark Handcrafted

Traditional craftsmanship combined with a modern design aesthetic bring even more life into this exclusive floor.

Refined by hand – perfect in imperfection

Unicopark Handcrafted stands out with its natural aesthetic and perfect imperfections. The manually refined surface produces an extraordinary interplay of colour, structure and integrated details, preserving the natural quality of the wood. The knots and cracks are carefully highlighted through elaborate manual procedures. Traditional brushing and planing techniques underscore the structure of the wood and put a spotlight on the refined surface. All this makes every plank a unique object, providing elegant accents and a very special tactile experience, thanks to its charming irregularities.



Lava



Roccia



Fulvo



Mandorla

Villapark True Colours Edition is available in the following colours:

- 
Oak slightly smoked Canneto
- 
Oak slightly smoked Terra
- 
Oak smoked Lava
- 
Oak Roccia
- 
Oak Nuvola

Unicopark Handcrafted is available in the following colours:

- 
Oak Avorio
- 
Oak Mandorla
- 
Oak Fulvo

KNOWLEDGE

Every facet of parquet

The design options for parquet in bathrooms and kitchens, designed to be child and pet-friendly, are almost unlimited. Stairs covered with Bauwerk Parquet fit seamlessly as a harmonious link between floors. Wood carries the power of nature. Wood lives and breathes. Wood is a stylish and conscious decision – for the present, the future and generations to come.

Parquet is changeable and flexible – in all situations...

1 | Huchler Barn Waiblingen DE, Photos: David Franck; Product: Cleverpark 1250 Oak Farina; 2 | Schweizerbad CH (Fraefel AG), Product: Formpark Mini Oak smoked; 3 | House Ebnat-Kappel CH, Photo: Simone Vogel, Product: Villapark Oak Avorio; 4 | House Balgach CH, Photo: Carole Arbenz, Product: Villapark Oak Mandorla; 5 | Villapark Walnut



Discover everything worth knowing about your life with parquet:



GOOD REASONS

to choose parquet

This is why parquet by Bauwerk is the right choice for you: It is timelessly beautiful and always on trend. It brings warmth to your home, as well as being sustainable and healthy for living. Every natural product is also unique, making any home with a parquet floor special.

1. UNIQUE

Every plank is unique, making your floor exclusively special.

2. 100 % HEALTHY LIVING

Parquet by Bauwerk is 100 % healthy living, making a positive contribution to the indoor climate and personal well-being.

3. CUSTOMISABLE

Parquet types range from light and calm to dark and full of character with different surfaces, and come in many formats. Parquet can also be laid in a countless number of patterns.

4. SUSTAINABLE

Our authentic-wood floors come from a sustainable forest estate in Europe, are made in a resource-saving way, and have a good eco-balance.

5. PLEASANT

Parquet floors do not accumulate static electricity, feel warm to cold feet, and remain pleasantly cool on hotter sunny days.

6. QUIET

Gluing the parquet down significantly reduces walking noises.

7. EASILY RENOVATED

Parquet can be changed. If necessary, it can be sanded and renovated a number of times.

8. SERVICE

As an owner of parquet by Bauwerk, you can always contact the manufacturer directly with your questions and concerns throughout the entire life of the product!

9. NATURAL

Thanks their unique variety, wooden floors add a natural charm to any room.

10. EASY TO CARE FOR

Cleaning various parquet surfaces is easy and uncomplicated.

11. TIMELESS

Wood is timelessly beautiful, and parquet is both classic and transformative, with excellent performance from old apartments to lofts, from living rooms to bathrooms.

12. LASTING

Parquet is known for its longevity. With proper care, parquet can survive for generations, and become even more beautiful over time.

With the Eco Institut Label certification and the Cradle to Cradle® award, Bauwerk Parquet provides homeowners and their families with peace of mind that its products are 100 % healthy living.



VILLAPARK
TRUE COLOURS EDITION

Oak slightly smoked Terra, lively

Parquet is taking over OUR HOMES

When we think about parquet, we usually imagine living rooms and bedrooms, where this natural material creates an even stronger sense of comfort. But what about rooms like the kitchen or bathroom? And is parquet suitable for households with children and pets? Be it wet feet after a warm bath, dirty paws coming in from the garden or children turning the living room into a playroom, Bauwerk parquet can handle any situation: easy to care for, durable and robust.

1 | Villapark Oak Mandorla

2 | House Rheinau CH, Photo: Simone Vogel,
Product: Formpark Oak Nature

3 | Studiopark Oak smoked

4 | House Balgach CH; Photo: Carole Arbenz,
Product: Villapark Oak Mandorla



1

Parquet in kitchens and bathrooms

With the right preparations and care, parquet can work well in a kitchen or bathroom. Bauwerk Parquet's high-quality, full-area bonded parquet with carefully sealed joints prevents moisture from accumulating under the flooring or in cracks. There are also special water-repellent surface treatments available. When applied, parquet by Bauwerk can handle wet feet and small splashes of water.

Parquet in households with families and pets

Mishaps are not uncommon in homes with children and pets, and parquet must be durable enough to withstand them. Because of its robustness and innovative surface treatments, the high-quality and healthy-for-living authentic oak parquet by Bauwerk is well-protected and very forgiving. Cleaning and caring for it is also uncomplicated and extremely easy.



2



3



TRENDPARK

Oak smoked, lively

Reference: House Balgach, CH | Architecture: Novaron Architekten | Photo: Bruno Helbling

RENOVATION

of and with parquet

Replacing individual planks, sanding the entire surface or giving the floor a completely new look with surface treatments: all this is possible with parquet.

Refreshing a parquet

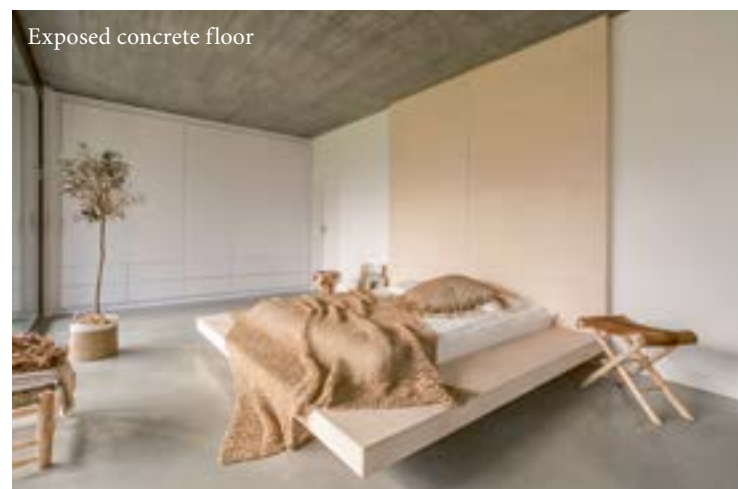
First and foremost, an authentic wooden floor stands out for its robustness. But wood also works, breathes and takes in the stories that life writes into it, making it an unmistakably unique object. However, when it comes to removing signs of wear accumulated over the years, even decades of use, parquet has one decisive advantage compared to other types of flooring: it can be renovated. How successful the renovation will be, largely depends on the structure and composition of the parquet. The thickness of the top layer is not the only factor here: sanding a parquet can only be done without any problems if the parquet has been accurately processed and is perfectly attached to its base.

The floor does not necessarily need to be sanded to refresh its look. Depending on wear and the desired result, professional basic cleaning followed by an oil treatment is often enough. This means that the same parquet floor can remain in place for generations.

Make your home beautiful with parquet

But it's not just parquet that can undergo renovation. It can be installed as part of a general renovation of a house or an apartment, giving the living space a cosier atmosphere. Parquet can often be laid over the existing flooring, in which case removing it is unnecessary.

For more information about renovating parquet, visit bauwerk-parkett.com/renovation



Good to know

- › Sufficient, regular care extends the life of the flooring.
- › According to the ISP (Swiss Parquet Market Interest Group), the expected service life of a parquet floor is up to 40 years.
- › When sanding a parquet, you usually remove 0.5–0.7 mm off its top layer. This means that any floor by Bauwerk Parquet can be sanded multiple times.
- › Consult with your floor installer in advance, or contact us directly.



SILVERLINE EDITION

Oak Silver, calm

Reference: Stadtvilla Allenmoos Zürich, CH | Architecture: Von Ballmoos Krucker Architekten AG | Photo: Bruno Helbling

WOOD LIVES *and breathes*

Colour change due to light

Wood is a natural material that people have used and processed over the ages: Wood lives and breathes and it is unique in its colours, structure and warm surface. When properly processed, its irregularities make it truly beautiful and give every home a cosy, warm feel.

Appearance and use

Oak wood has a grey-yellow to yellow-brown core. The growth rings are clearly visible in the oak and give it a uniform grain. Because of its resistance to moisture and its distinctive aroma, oak is used to produce casks to store wine, whiskey or sherry.

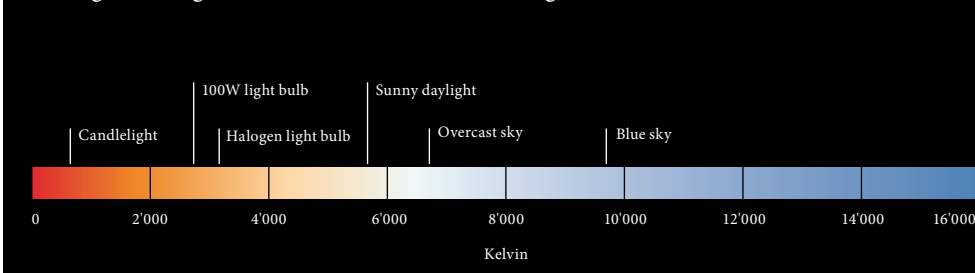
The natural play of colours in wood

Wood is a natural product that slowly develops its natural colour. This happens especially in the early days and it enhances the character of flooring made from real wood. Wood can become darker or lighter with age, or change its shade. The colour tones of smoked wood hardly change at all. Smoked oak only lightens slightly through exposure to sunlight and becomes more golden.

Playing with light

When designing a room, it's worth keeping lighting in mind. The warmth of the light affects both our perception of the floor and our mood. Cool lighting has a refreshing and invigorating effect, while warm light creates a sense of comfort and a cosy atmosphere.

Changes through the natural UV radiation in light



*Wood is unique, and no two planks are the same.
The art lies in emphasising this natural uniqueness.*

UNICOPARK

Oak Avorio, lively

SERVICE

Choosing the right floor

A non-binding consultation, a face-to-face conversation and countless tools accompany you on your way to your dream floor with Bauwerk.

There are various factors to consider when choosing a floor. In the end, however, it's always about warmth, security and a sense of well-being. This is the reason why people feel so comfortable with our parquet. We are more than happy to guide you through this process.

Experience and feel parquet...

EXPERIENCE

parquet with all your senses

Inspiration and advice in our showrooms

Buying parquet involves several decisions. If you are interested in building, rebuilding or expanding a parquet floor, visit one of our numerous Bauwerk Worlds of Parquet.

In an inspiring atmosphere, you will experience a wide variety of parquet floors and innovative consulting tools that combine the interaction of the type of wood and the laying direction with wall colours, living styles and other furnishing materials, such as fabrics, carpets or tiles.

Enjoy a warm welcome and chat with our experienced parquet consultants. They will be happy to answer any of your questions about parquet and your wishes with no strings attached.



- 1 | Large sample panels help you visualise the effect parquet will have in your home.
- 2 | With our 'Material Tool', you can not only zoom in on sample panels, but also test how they harmonise with tiles, carpets, fabrics or kitchen surfaces.
- 3 | Bauwerk World of Parquet St. Margrethen, Switzerland

Find a Bauwerk World of Parquet or a showroom of one of our installation partners near you:



We offer A FULL SERVICE



10 year warranty – with the Bauwerk ID

Every floor by Bauwerk is a unique piece, an authentic element of your living space, made by Bauwerk to the highest quality standards, carefully selected by you and professionally installed by a specialist. As the durability of our floors is a key quality feature for us, we have created a special Bauwerk ID. It makes a permanent mark representing our understanding and our seal of quality, which we use to actively support you in caring for your floor. The unique Bauwerk ID can be used to register your floor, and doing so will help ensure you get the best out of it.



Cleaning & Care Workshops: Concentrated expert knowledge

There are a few floors that are easier to maintain than parquet. Cleaning and taking care of the various surfaces of the parquet is extremely easy. Do you have any questions about cleaning and taking care of your parquet floor? There is an expert tip for every situation and every floor – be it lacquered or natural oiled. With these tips, cleaning and taking care of your parquet will become even simpler, and you will enjoy your high-quality Bauwerk Parquet floor for even longer.

For more information, read the 'Cleaning and Care' section of our website and register for one of our workshops.



Find your desired parquet flooring online

Wood is timelessly beautiful and fits in any interior design – even in the kitchen or bathroom. When properly cared for, parquet can last for generations and grow even more beautiful. If necessary, it can also be sanded and renewed several times. This means your parquet floor can last you a lifetime.

Bauwerk Parquet offers options for every budget. Calculate the target price for your floor: *Save your favourite parquet flooring on our website using the heart symbol and then calculate the target price for your desired parquet flooring.*

bauwerk-parkett.com/en/parquet-finder



Visualise your personal living space with parquet by Bauwerk Parquet

Explore more than 200 of our products to find the parquet that best matches you and your lifestyle. Bauwerk's Parquet Visualizer sets up a virtual parquet floor in your own four walls and helps you choose the flooring of your dreams.

Our website has the right tools for choosing your parquet. With our Parquet Finder, you can use filters to select your favourites out of over 350 products.

Try it out yourself: visualizer.bauwerk-parkett.com



Discover our showrooms in an online 3D tour.

You can visit some of our Worlds of Parquet not only in person, but also virtually. The simple controls let you navigate the showroom easily. You will get access to various consulting tools and additional information about the products presented, with just a click of your mouse.

bauwerk-parkett.com/3D-showroom



Find the right cleaning & care products in our online shop

With the right cleaning and care, you will enjoy your parquet for a long time. That's why Bauwerk Parquet offers you various cleaning and care products that are perfectly matched to your parquet floor. The individual surface treatment applied to Bauwerk floors protects the valuable parquet wood from wear and dirt.

shop.bauwerk-parkett.com

Parquet for a GOOD CAUSE

Our involvement in social and charitable endeavours

Throughout our long running Parquet Magic campaign, we have been able to support countless charitable projects. Whether it be in pre-school or social facilities, leisure clubs or scout huts, the parquet we donate creates magic in spaces that need an atmosphere of wellness, bringing joy to the people in them.

The annual campaign

Every year, between the beginning of November and the end of February, social institutions and associations can submit their applications on the Bauwerk Parquet's website. These also include a few state-funded organisations. We are happy to receive the numerous submissions and to share this happiness with a few winners every year by supplying them with our parquet. To find out more about the terms of participation, visit bauwerk-parkett.com/parquet-magic

Social commitment: deep in Bauwerk's DNA

For us as a brand, this campaign is our connection to the work of our founder, Ernst Göhner (1900–1971). In 1935, the Swiss business pioneer applied the concept of solid parquet to mass production before founding Bauwerk Parquet. The Ernst Göhner Stiftung, a foundation dedicated to philanthropic and business pursuits, is his legacy to the world. EGS Beteiligungen AG, a company affiliated with the foundation, has been the principal owner of Bauwerk Group since 2018. Every year, the Ernst Göhner Stiftung carries out charitable activities in artistic, cultural, environmental, social, educational, and scientific fields. In 2021 alone, the foundation supported over 1300 projects.



IMPRINT

<p>Bauwerk Group Schweiz AG Neudorfstrasse 49 CH-9430 St. Margrethen bauwerk-parkett.com</p>	<p>Editor: Bauwerk Parkett Samuel Votruba Text: Bauwerk Parkett Pia Kautz, bering*kopal Rainer Häupl Layout: Bauwerk Parkett Kim Arbenz</p>	<p>Styling: Karin Frey, Zurich Jeanette Blättler, Zurich Gesä Hansen, Paris Alexandra Rawlinson, Zurich Miriam Medri, Hamburg Sibylle Kaelin, Zurich</p>	<p>English: 2'500 / 04.2023 / 1015 6846 Since 2021 our printing products are Cradle to Cradle® Bronze certified:</p>	<p>Printed on Evolution Blue Nature Cradle to Cradle® 120 g/m² for the content and 300 g/m² for the cover.</p>
---	---	--	--	--

Highest eco-effectiveness
Cradle to Cradle Certified®
print products by Lokay

CLEVERPARK 900

Eiche Natur, lebhaft

Referenzreferenz Albstadt-Haus Scharfhausen, CH | Architektur: Dostr. Architektur GmbH | Foto: Andrin Winteler, Büro Bureau

In 1935, Ernst Göhner brought the idea of solid parquet to series production before founding Bauwerk Parkett in 1944. Since then, Bauwerk has been researching, developing and manufacturing innovative, aesthetic parquet solutions of the highest quality with great passion and Swiss precision. Original parquet floors from Bauwerk, one of the leading parquet manufacturers in Europe, offer the unique feel of a piece of real nature that provides tangible warmth and healthy living for a perfectly balanced atmosphere in any room. *bauwerk-parkett.com*

